

AGENDA

Meeting: Stonehenge Area Board
Place: Phoenix Hall, High St, Netheravon, Salisbury SP4 9PJ
Date: Thursday 26 September 2024
Time: 6.30 pm

Including the Parishes of: Amesbury, Berwick St James, Bulford, Durnford, Durrington, Enford, Figheldean, Fittleton cum Haxton, Great Wishford, Milston, Netheravon, Orcheston, Shrewton, South Newton, Stapleford, Tilshead, Wilsford cum Lake, Winterbourne Stoke, Woodford

The Area Board welcomes and invites contributions from members of the public. The Chairman will try to ensure that everyone who wishes to speak will have the opportunity to do so.

If you have any requirements that would make your attendance at the meeting easier, please contact your Democratic Services Officer.

Networking opportunity from 6.00pm.

Please direct any enquiries on this Agenda to Tara Hunt, direct line 01225 718352 or email tara.hunt@wiltshire.gov.uk

All the papers connected with this meeting are available on the Council's website at www.wiltshire.gov.uk

Press enquiries to Communications on direct lines (01225) 713114 / 713115.

Wiltshire Councillors

Cllr Robert Yuill, Amesbury South (Chairman)
Cllr Mark Verbinnen, Amesbury East and Bulford (Vice-Chairman)
Cllr Ian Blair-Pilling, Avon Valley
Cllr Kevin Daley, Till Valley
Cllr Dr Monica Devendran, Amesbury West
Cllr Graham Wright, Durrington

Recording and Broadcasting Information

Wiltshire Council may record this meeting for live and/or subsequent broadcast. At the start of the meeting, the Chairman will confirm if all or part of the meeting is being recorded. The images and sound recordings may also be used for training purposes within the Council.

By submitting a statement or question for a meeting you are consenting that you may be recorded presenting this and that in any case your name will be made available on the public record. The meeting may also be recorded by the press or members of the public.

Any person or organisation choosing to film, record or broadcast any meeting of the Council, its Cabinet or committees is responsible for any claims or other liability resulting from them so doing and by choosing to film, record or broadcast proceedings they accept that they are required to indemnify the Council, its members and officers in relation to any such claims or liabilities.

Details of the Council's Guidance on the Recording and Webcasting of Meetings is available on request. Our privacy policy can be found [here](#).

Parking

To find car parks by area follow [this link](#).

Public Participation

Please see the agenda list on following pages for details of the items for discussion. The Area Boards welcome public participation and the Chairman will try to ensure that everyone has the opportunity to participate where possible. To discuss matters not on the agenda, please contact the officer named on the front page, ahead of the meeting.

For extended details on meeting procedure, submission and scope of questions and other matters, please consult [Part 4 of the council's constitution](#).

The full constitution can be found at [this link](#).

Our privacy policy is found [here](#).

For assistance on these and other matters please contact the officer named above for details

Area Board Officers

Strategic Engagement & Partnerships Manager (SEPM) –

graeme.morrison@wiltshire.gov.uk

Area Board Delivery Officer – karlene.jammeh@wiltshire.gov.uk

Democratic Services Officer – tara.hunt@wiltshire.gov.uk

Items to be considered	Time
<p style="text-align: center;"><u>Welcome and Introductions</u></p> <p>To welcome those present to the meeting.</p> <p>1 Apologies for Absence</p> <p>To receive any apologies for the meeting.</p> <p>2 Minutes (<i>Pages 1 - 12</i>)</p> <p>To confirm the minutes of the meeting held on 13 June 2024.</p> <p>3 Declarations of Interest</p> <p>To receive any declarations of disclosable interests or dispensations granted by the Standards Committee.</p> <p>4 Chairman's Updates</p> <p>The Chairman will give any updates on outcomes and non-priority actions arising from previous meetings of the Area Board.</p> <ul style="list-style-type: none"> • The consultation on proposed reforms to the National Planning and Policy Framework, closes at 11.45pm on 24 September. For more information please see: Proposed reforms to the National Planning Policy Framework and other changes to the planning system - GOV.UK (www.gov.uk) • A303 Stonehenge Tunnel update 	6.30pm
<p>5 Information items (<i>Pages 13 - 68</i>)</p> <p>The Board is asked to note the following Information items:</p> <ul style="list-style-type: none"> • Community First • Healthwatch Wiltshire • Update from BSW Together (Integrated Care System) • Stonehenge & Avebury World Heritage Site: https://www.stonehengeandaveburywhs.org/ • Wiltshire Council Information Items: <ul style="list-style-type: none"> ○ Gypsies and Travellers Development Plan consultation (closes 5pm on 4 October) ○ Wiltshire Council Consultation Portal ○ Families and Children's Transformation (FACT) Transitional Safeguarding Project ○ Families Children's Transformation (FACT) Family Help Project ○ Overview of Wiltshire Youth Council ○ Cost of Living update 	6.40pm

6 **Open Floor - including updates from Partners and Town/Parish Councils (Pages 69 - 80)** **6.50pm**

Open floor session with updates from partners, parishes and free flow discussion.

Verbal Updates

To receive any verbal updates from representatives, including:

- Wiltshire Police – Inspector Ricky Lee
- Wiltshire and Swindon Road Safety Partnership – Perry Payne
- MOD Boscombe Down – Kev Taylor
- Town and Parish Council's

7 **Stonehenge Area Board Priorities** **7.20pm**

To receive updates from lead councillors for the local Area Board priorities (where not covered by other agenda items):

The Stonehenge Area Board priorities are:

- Youth Engagement – Cllr Mark Verbinnen (covered under Youth Updates)
- Environment – Cllr Kevin Daley and Cllr Rob Yuill
- Improving the health and wellbeing of our community – Cllr Monica Devendran and Cllr Graham Wright (covered under the HWB Group)
- Community Engagement – Cllrs Graham Wright and Cllr Ian Blair-Pilling

8 **Positive Activities for Young People** **7.30pm**

To receive an update on youth activities and consider any applications for youth grants.

Remaining Budget:

Young People
£19,518.92

Young People Grants:

Ref/Link	Grant Details	Amount Requested
ABG1975	Amesbury Junior Football Club towards training	£3,510

For more details, please see the grant report at agenda item 11.

9 **Health & Wellbeing Group**

7.40pm

To receive an update on the Health and Wellbeing group and consider any applications for Older and Vulnerable Adults grants.

Remaining Budgets:

Older & Vulnerable
£3,296

Older & Vulnerable Grants:

Ref/Link	Grant Details	Amount Requested
ABG1955	Wiltshire Music Centre towards Celebrating Age Wiltshire	£1,500

For more details, please see the grant report at agenda item 11.

10 **Local Highways and Footpath Improvement Group (LHFIG)**
(Pages 81 - 100)

7.50pm

To note the minutes and consider any recommendations arising from the last LHFIG meeting held on 3 July 2024, as set out in the attached report.

Recommendations: (Amount to be approved in bold text)

- 1-22-16 Figheldean 20mph speed limit implementation
£10,000 (LHFIG **£7,500**. FPC £2,500)

Further information on the LHFIG process can be found [here](#).

11 **Community Area Grants** (Pages 101 - 104)

8.00pm

To determine the applications for Community Area Grant funding.

Remaining Budgets:

Community Area Grant
£9,516.22

Community Area Grants:

Ref/Link	Grant Details	Amount Requested
ABG1889	God Unlimited (GUL) Outdoor Therapy towards GUL riverside classroom installation	£5,000
ABG1969	Woodford Village Hall towards a PA	£1,493

	system	
--	--------	--

Delegated Funding

The Board is asked to note the following funding awards already made under the Delegated Funding Process, by the Strategic Engagement & Partnership Manager, between meetings due to matters of urgency:

- [ABG1981](#) – Area Board Initiative, English lessons for Afghan women from EP families, £500 (Older and Vulnerable budget)
- [ABG1983](#) – Area Board Initiative, refreshments and transport to and from the Youth Fair on Durrington Rec on Sunday 29 September (Youth budget)

Further information on the Area Board Grant system can be found [here](#).

Close and Future Dates

Future Meeting Dates (6.30pm to 8.30pm):

- 28 November 2024 - Shrewton Village Hall and Recreation Ground, The Hollow, Shrewton, SP3 4JY
- 27 February 2025 - Antrobus House, 39 Salisbury Rd, Amesbury, Salisbury SP4 7HH

For information on applying for a grant or grant application deadlines for these meetings, contact the Area Board Delivery Officer, karlene.jammeh@wiltshire.gov.uk

MINUTES

Meeting: Stonehenge Area Board
Place: Durrington Village Hall, High St, Durrington, Salisbury SP4 8AD
Date: 13 June 2024
Start Time: 6.30 pm
Finish Time: 8.25 pm

Please direct any enquiries on these minutes to:

Lisa Alexander, (Tel): 01722 434560 or (e-mail) Lisa.Alexander@wiltshire.gov.uk

Papers available on the Council's website at www.wiltshire.gov.uk

In Attendance:

Wiltshire Councillors

Cllr Graham Wright (Chairman), Cllr Robert Yuill (Vice-Chairman), Cllr Ian Blair-Pilling, Cllr Kevin Daley, Cllr Dr Monica Devendran and Cllr Mark Verbinnen (Vice-Chairman) and Cllr Graham Wright.

Wiltshire Council Officers

Graeme Morrison – Strategic Engagement & Partnership Manager
Lisa Alexander – Senior Democratic Services Officer

Partners

Wiltshire Police – Inspector Ricky Lee
Dorset & Wiltshire Fire and Rescue Service – Area Commander Warren Hathaway

Total in attendance: 25

<u>Minute No..</u>	<u>Summary of Issues Discussed and Decision</u>
11	<p><u>Election of Chairman 2024/25</u></p> <p>Nominations for Chairman were sought.</p> <p>It was;</p> <p>Resolved:</p> <p>That Councillor Robert Yuill was elected as Chairman for 2024/25.</p>
12	<p><u>Election of Vice-Chairman 2024/25</u></p> <p style="text-align: center;">Cllr Robert Yuill in the Chair</p> <p>Nominations for Vice-Chairman were sought.</p> <p>It was;</p> <p>Resolved:</p> <p>That Councillor Mark Verbinnen was elected as Vice-Chairman for 2024/25.</p>
13	<p><u>Apologies for Absence</u></p> <p>Apologies for absence had been received from:</p> <ul style="list-style-type: none"> • Netheravon Parish Council
14	<p><u>Minutes</u></p> <p>Resolved:</p> <p>That the minutes of the meeting held on 29 February 2024 were agreed as a correct record and signed by the Chairman.</p>
15	<p><u>Declarations of Interest</u></p> <p>There were no declarations of interest.</p> <p>For clarity, Councillor Ian Blair-Pilling made a statement regarding funding items. Due to his recently allocated portfolio for Area Boards, he now also was a member of the Area Board Grant Evaluation Panel, where he had the role of deciding whether grants outside of the Area Board Funding Criteria could be considered at an Area Board.</p>

	<p>Due to his Area Board portfolio and his position on the Area Board Grant Evaluation Panel, Cllr Blair-Pilling would not be taking part in the vote for any funding applications considered by the Stonehenge Area Board.</p>
16	<p><u>Chairman's updates / Information items</u></p> <p>The Board noted the following Information items:</p> <ul style="list-style-type: none"> • Community First • Healthwatch Wiltshire • Update from BSW Together (Integrated Care System) • Wiltshire Age UK • Stonehenge and Avebury World Heritage Site: https://www.stonehengeandaveburywhs.org/ • Wiltshire Council Information Items: <ol style="list-style-type: none"> 1. Consultation on Statement of Licensing Policy 2. Wiltshire Council Consultation Portal - Keystone 3. Local Nature Recovery Strategy Public Engagement. 4. Multiply – numeracy support for adults.
17	<p><u>Open Floor - including updates from Partners and Town/Parish Councils</u></p> <p>The Chairman referred to the updates set out in the agenda and invited further updates from Town/Parish Councils and other Partners, including outside bodies. It was noted that the preferred option was for written updates, to minimise time spent during the meeting.</p> <p>Verbal updates</p> <p><u>Wiltshire Police – Inspector Ricky Lee</u></p> <p>In addition to the written report in the pack, Inspector Lee gave an update which included:</p> <ul style="list-style-type: none"> • A new management scheme led by the Chief Constable had been rolled out. • The 101-call service was now answering within the timescales of government guidance times • A new police model was in operation with more officers on shift at one time. • The force remained under significant demand as a public service. • Work included managing the challenges of the developing Stonehenge tunnel. • A change in traffic movements due to the A360 diversion, but we have been advised that work was still on track for mid July. • A current scam involved courier fraud, where people purporting to be police officers or other officials were making contact with people to ask for information which they then used in a scam. People were urged to be

mindful when receiving messages they were not expecting when asked for personal or financial information.

Questions:

There had been an increase in extended stopovers by the travelling community around the community area lately. Could the process for moving them on be sped up?

Answer: Unauthorised site use by the travelling community could be frustrating, with increased reports in criminality around these locations. However, there were limits to what was possible, the Police were as robust with the process of removal as was achievable. Target hardening was a successful method in prevention.

There had been some local concerns regarding some new shops that only accepted cash and had only non-English speaking staff. Could the Police check those businesses to make sure there was nothing untoward going on in terms of trafficking etc.

Answer: We do regular engagement with the people trafficking units and carry out spot checks on sites where there was evidence of trafficking.

Cllr Devendran thanked Inspector Lee for the recent work on Amesbury car park which had effectively resolved an issue.

In other countries they had a secret hand signal which people could use if they were in danger due to trafficking, to alert others they need help. Was there a similar scheme in the UK?

Answer: I am not aware of any schemes. I will take that back.

At the last meeting I raised concerns regarding ASB towards volunteers and members of our youth groups. I want to thank you for your efforts, and we have seen positive results.

Answer: We are a small force in a large geographical county, we do our best to cover it all.

The report in the agenda provides links to data which covers part of our community area but not all of it.

Answer: Unfortunately, the community areas of Wiltshire Council do not align with the policing team areas of Wiltshire Police.

MOD Boscombe Down – Sgt Jim Smith

Sgt Smith introduced himself as the new MOD community representative for Boscombe Down. His job was to engage and interact between the MOD community and the civilian community.

Town and Parish Council Updates:

Thanks to the grant previously awarded by the Board to purchase a new laptop,

	<p>the production of a Village Newsletter had been successful. A few copies had been circulated at the meeting for people to take away.</p> <p>Downton TC was supporting the ‘Hustings’ event on 27 June at 7pm at Durrington Village Hall, which would offer people the chance to ask questions of 5 of the 6 party candidates. If you wish to submit questions in advance of the event, please send to gwright@durringtontowncouncil.gov.uk</p>
18	<p><u>Area Board End of Year Report</u></p> <p>Graeme Morrison, Strategic Engagement & Partnership Manager presented the Area Board End of Year Report.</p> <p>The update included a summary of Area Board Investments through Grant funding and a quintile investment table.</p> <p>As part of the Rural Youth Outreach project an outdoor activity event had taken place recently in Durrington which had been a real success with those involved.</p> <p>Cllr Wright thanked Graeme Morrison and the team for their support in what had been achieved during his term as Chairman over the last 3 years, noting his confidence that the Board could continue to deliver increased visibility, more interaction with Parishes and support for communities through the Area Board Priorities.</p> <p>The Chairman gave thanks to Graham Wright for his work as Chairman over the last 3 years and for his work in making the LHFIG more productive.</p>
19	<p><u>Community Area Joint Strategic Needs Assessment and Priority Setting</u></p> <p>Graeme Morrison, Strategic Engagement & Partnership Manager presented information gathered from the Joint Strategic Needs Assessment (JSNA).</p> <p>The Area Board had held an Awards and Recognition evening to show thanks to individuals and groups in the community for their work. During the event attendees were invited to consider the JSNA data and contribute to the list of suggested priorities for 2024/25.</p> <p>The new list of priorities which arose from that event were:</p> <ul style="list-style-type: none"> • Youth Engagement • Environment • Improving the health and wellbeing of our community • Community Engagement <p>The Board then discussed appointing lead members to each priority, and after discussion, it was;</p> <p>Resolved:</p>

	<p>That Stonehenge Area Board approves the priority areas for 2024/25, with lead members as:</p> <ul style="list-style-type: none"> • Youth Engagement – Cllr Mark Verbinnen • Environment – Cllr Kevin Daley • Improving the health and wellbeing of our community– Cllr Monica Devendran and Cllr Graham Wright • Community Engagement – Cllrs Graham Wright and Cllr Ian Blair-Pilling <p><i>Note: The Chairman stated that he would float over all priorities and assist or attend meetings whenever he was needed.</i></p>
20	<p><u>Appointments to Outside Bodies and Working Groups</u></p> <p>The Board considered the report and it was;</p> <p>Resolved:</p> <p>The Area Board agreed to:</p> <ol style="list-style-type: none"> a. Appoint Members as Lead representatives to Outside Bodies, any Non-Priority Working Groups and to the LHFIG, as set out at Appendix A; b. Note the Terms of Reference as set out in Appendix B.
21	<p><u>Positive Activities for Young People</u></p> <p>The Board noted the Youth grant budget allocation for 2024/25 as £22,414.</p> <p>Lead member for Youth, Cllr Mark Verbinnen gave an update which included:</p> <ul style="list-style-type: none"> • The first youth engagement event had been held in Durrington, with thanks to all involved. • The next LYN meeting was due to be held on 18 July 2024 – in the Bulford Scout Group – any youth group or clubs were welcome to attend to take part in discussions.. <p>Youth Grants:</p> <p><u>Army Welfare Service Community Support Larkhill, Youth Project, requested £2495.08.</u></p> <p>The Applicant spoke in support of the project.</p> <p>Cllr Verbinnen moved the motion to award in full. This was seconded by Cllr Yuill.</p> <p><u>Resolved</u></p>

Army Welfare Service Community Support Larkhill was awarded £2495.08 towards the youth project.

Reason – The application met the Community Area Grants Criteria 2024/25

Buzz Action Foundation CIO, Amesbury Youth Café, requested £5000

The Applicant spoke in support of the project, noting his disappointment that there had not been a LYN meeting in advance of the Area Board meeting to consider the applications on this occasion.

Questions:

The project appeared to be centrally focused on Amesbury, whereas the Stonehenge Community Area was much wider and included areas such as the Till Valley. Where was the youth offer for those areas?

How did the Board know whether the whole award would go towards the young people in the Stonehenge Community Area, when your provision of activities includes several other Community Areas?

Answer: The local school in Woodford benefitted from us in March. The events listed were beneficial to the young people in Amesbury, and we took them to the events. None of the money awarded by this Board goes to projects in other community areas or parishes. The Landford youth club was paid for by Southern Wiltshire Area Board. I agree that the whole community area should be provided for and we do regularly provide activities around the community area.

The Board noted that most applications were one off or as start-up costs, the Area Board must consider how to best distribute its limited funding across the whole community area, to an array of applicants. It did not wish to keep awarding the same applicants year on year.

The Strategic Engagement and |Partnership Manager explained that the criteria did allow for applicants to apply in consecutive years, providing the criteria was met and that it was for the Area Board to decide how to allocate the funding in line with the Funding Criteria.

The Board confirmed that on this occasion, as this was the first meeting of the financial year, it would not be supporting the application for £5000 of the Youth budget, so to enable funding to be available for a wider range of projects throughout the rest of the year.

Cllr Yuill moved the motion to refuse the application.
This was seconded by Cllr Daley.

Resolved

The application from Buzz Action Foundation CIO was Refused.

Reason – The Applicant had previously received funding for multiple projects and the Area Board wish to retain its funding for distribution

	<p><i>throughout the remainder of the year to a wider selection of applicants.</i></p> <p><u>Wiltshire Schools Athletics Association, purchase of Kit, requested £1250</u> The Board was advised by the Strategic Engagement and Partnership Manager that this application did not meet the Funding Criteria, and therefore the applicant had been advised that it would be withdrawn from consideration. The Strategic Engagement and Partnership Manager would enquire about possible alternative funding routes for the project. Cllr Graham Wright and Cllr Verbinnen were supportive of this.</p> <p><u>Resolved</u> The Application by Wiltshire Schools Athletics Association, was withdrawn. <u>Reason</u> – <i>The application did not meet the Grants Criteria 2024/25</i></p>
22	<p><u>Health & Wellbeing Group</u></p> <p>The Board noted the Health & Wellbeing Allocation for 2024/25 as £7,700.</p> <p>Lead member for Health & Wellbeing, Cllr Monica Devendran then gave an update, main points included:</p> <ul style="list-style-type: none"> • A concert had been held in connection with Silver Salisbury at Antrobus House with 80 attendees. Thanks were given to those that had helped with the event. • The Area Board had held an Awards and Recognition evening to show thanks to individuals and groups in the community for their work. The slides listing the names of those who received an award is attached to the minutes. <p>Older & Vulnerable Grants:</p> <p><u>Bakehouse Mental Health and Wellbeing Support Group, towards the support group, requested £499.</u> The Applicant spoke in support of the project.</p> <p>Cllr Devendran moved the motion to award in full. This was seconded by Cllr Wright.</p> <p><u>Resolved</u> Bakehouse Mental Health and Wellbeing Support Group was awarded £499 towards the support group project. <u>Reason</u> – <i>The application met the Community Area Grants Criteria 2024/25</i></p> <p><u>Wiltshire Digital Drive, Volunteer opportunity Amesbury, requested £4275.84</u> The Strategic Engagement and partnership Manager explained that the application did not meet the funding criteria and that the Applicant had been</p>

	<p>advised it would be withdrawn from consideration.</p> <p><u>Resolved</u> The application from Digital Drive was Withdrawn <i>Reason – The application did not meet the Grants Criteria 2024/25</i></p> <p><u>Till Valley Day Centre towards running costs of the day centre, requested £1905</u> The Applicant spoke in support of the project.</p> <p>Cllr Devendran moved the motion to award in full. This was seconded by Cllr Wright.</p> <p><u>Resolved</u> Till Valley Day Centre was awarded £1905 towards running costs of the day centre. <i>Reason – The application met the Community Area Grants Criteria 2024/25</i></p> <p><u>Silver Salisbury Group, towards extending Silver Salisbury in the Stonehenge area, requested £1000</u> The Applicant spoke in support of the project.</p> <p>Cllr Devendran moved the motion to award in full. This was seconded by Cllr Verbinnen.</p> <p><u>Resolved</u> Silver Salisbury Group was awarded £1000 towards extending Silver Salisbury in the Stonehenge area. <i>Reason – The application met the Community Area Grants Criteria 2024/25</i></p> <p><u>Salisbury Plain Military Wives Choir, towards their 2024 music projects, requested £500</u> The Applicant spoke in support of the project.</p> <p>Cllr Devendran moved the motion to award in full. This was seconded by Cllr Wright</p> <p><u>Resolved</u> Salisbury Plain Military Wives Choir was awarded £500 towards 2024 music projects. <i>Reason – The application met the Community Area Grants Criteria 2024/25</i></p>
23	<p><u>Local Highways and Footpath Improvement Group (LHFIG)</u></p> <p>The Board considered the report and funding recommendations arising from the last LHFIG meeting held on 17 April 2024.</p>

	<p>It was;</p> <p>Resolved:</p> <p>To approve the LHFIG funding recommendations to the following schemes:</p> <ul style="list-style-type: none"> • 1-24-10 Shrewton London Road SID post - £500 (LHFIG £375, SPC £125)
24	<p><u>Community Area Grants</u></p> <p>The Board noted the Community Area Grant budget allocation for 2024/25 as £24,831. Applicants present were invited to give a brief summary of each project followed by any questions from the Board.</p> <p>Cllr Mark Verbinnen introduced each grant application.</p> <p>Community Area Grants:</p> <p><u>Wiltshire South Girlguiding County Headquarters, Camp Kitchen & Tarmac play area, requested £2240</u></p> <p>The Applicant spoke in support of the project.</p> <p>Cllr Verbinnen moved the motion to award in full. This was seconded by Cllr Wright.</p> <p>It was;</p> <p><u>Resolved</u> Wiltshire South Girlguiding County Headquarters was awarded £2240 towards Camp Kitchen & Tarmac play area. <i>Reason – The application met the Community Area Grants Criteria 2024/25</i></p> <p><u>Shrewton Cricket Club, Changing Rooms Project, requested £5000</u></p> <p>The Applicant spoke in support of the project.</p> <p>Cllr Verbinnen moved the motion to award in full. This was seconded by Cllr Daley.</p> <p>It was;</p> <p><u>Resolved</u> Shrewton Cricket Club was awarded £5000 towards Changing Rooms Project. <i>Reason – The application met the Community Area Grants Criteria 2024/25</i></p>

Figgle Fest – Floodlights project requested £1584

The Applicant spoke in support of the project, to be held on 20 July 2024.

Cllr Verbinnen moved the motion to award in full.

This was seconded by Cllr Daley.

It was;

Resolved

Figgle Fest was awarded £1584 towards Changing Rooms Project.

Reason – The application met the Community Area Grants Criteria 2024/25

Buzz Action Foundation CIO, Activities Marquee, requested £1894.50

The Applicant spoke in support of the project.

Cllr Verbinnen moved the motion to award in full.

This was seconded by Cllr Yuill.

It was;

Resolved

Buzz Action Foundation CIO was awarded £1894.50 towards Activities Marquee.

Reason – The application met the Community Area Grants Criteria 2024/25

St Leonards Bulford Parent Teachers and Friends Association, Community library project, requested £5000

The Strategic Engagement and Partnership Manager explained that this application did not meet the Grants Criteria and that the applicant had been informed that it had been withdrawn from consideration.

Resolved

The application by St Leonards Bulford Parent Teachers and Friends Association was Withdrawn.

Reason – The application did not meet the Community Area Grants Criteria 2024/25

Enford Recreation Ground and Village Hall, a Carbon and Energy Reduction Project, requested £1781.28

The Applicant spoke in support of the project.

The applicant was asked whether they had tried to achieve a second quote for the works to establish a best price.

The Applicant explained that over years they had tried to get multiple quotes for

various works and now had a dedicated person who had been historically well priced.

Cllr Wright moved the motion to award in full.

This was seconded by Cllr Daley.

The motion failed.

Cllr Verbinnen then moved the motion to award in full with the caveat that the Applicant make an attempt to secure a second quote for the works as a comparison.

This was seconded by Cllr Wright.

It was;

Resolved

Enford Recreation Ground and Village Hall was awarded £1781.28 towards a Carbon and Energy Reduction Project.

Reason – The application met the Community Area Grants Criteria 2024/25

Delegated Funding:

The Board noted the following funding awards which had been made between meetings under the SEPM Delegated Funding Process, due to a matter of urgency:

- ABG1710, Fittleton Cum Haxton & Netheravon Newsletter Committee, £575 towards their newsletter.

Information links: [Area Board Grants](#) & [Grants Criteria](#)

Close & Future Dates

Networking – 6- 6.30pm for future meetings.

The Chairman noted that for future meetings there would be a networking session between 6.00 – 6.30pm where people were welcome to come and discuss individual matters with Councillors.

Future Meeting Dates (6.30pm to 8.30pm):

- 26 September 2024 - Phoenix Hall, High St, Netheravon, Salisbury SP4 9PJ
- 28 November 2024 - Shrewton Village Hall and Recreation Ground, The Hollow, Shrewton, SP3 4JY
- 27 February 2025 – Location TBC

Community First - AGM and Awards Celebration

The Community First Annual General Meeting and Awards Celebration will take place on **Wednesday 9th October 2024 (5.30-7.30pm)** at the Town Hall in Devizes. Refreshments will be provided. At the event we will share an overview of our work over the last 12 months and celebrate the achievements individuals involved in our programmes and services.

Voice It, Hear It - Stakeholder Engagement Registration



Voice It, Hear It is an innovative engagement project dedicated to enhancing health and social care services in Wiltshire. The project, which launched in early 2024, aims to engage residents and workers to co-produce, co-design, and co-develop local health and social care services. The Voice It, Hear It project is delivered by Community First, Wiltshire Service Users' Network, Wessex Community Action, Age UK Wiltshire, Alzheimer's Support and Celebrating Age Wiltshire, with funding from Wiltshire Council and Bath, North East Somerset, Swindon and Wiltshire Integrated Care Board (BSW ICB).

Voice It, Hear It is committed to amplifying the voices of adults with lived experiences, ensuring their insights are heard, shared, and acted upon. The project will collaborate with Wiltshire's health, education, and social care sectors, focusing on those who use these services and their caregivers. The primary aim of the partnership is to engage and seek the views of adults and children with:

- Learning disabilities and difficulties
- Physical impairments
- Sensory impairments
- Mental health needs
- Autism spectrum conditions
- Conditions associated with ageing, such as frailty and cognitive impairment
- Social, emotional, and behavioural needs
- Speech, language, and communication needs
- Substance use disorder
- Other factors impacting a child, adult, or family's ability to achieve positive outcomes (e.g., trauma, domestic abuse, exploitation)

The project seeks to collaborate with extended partners to better understand how and where to engage with the adult organisations you work with. By leveraging existing trusted relationships, the initiative aims to co-host and conduct consultations more effectively, ensuring the voices of these clients are included, valued, and acted upon. Your participation is crucial. By joining this effort, you will help ensure that the experiences of these communities inform new policies, strategies, and services.

To contribute, please register using the online form: <https://survey.zohopublic.eu/zs/7DDXym> and tell us about your organisation, your client organisation and how we might reach out through your networks. We have some funding available to support this work, including running workshops on behalf of Voice It, Hear It. Your involvement will aid in consulting clients and sharing their information as we develop new strategies and services for Wiltshire Council and BSW ICB.

For more information, please visit: www.communityfirst.org.uk/voice



Support for Unpaid Carers (Including Parent Carers) in Wiltshire



Community First is working in partnership with Age UK Wiltshire, Alzheimer's Support, Wiltshire Service Users Network, Citizens Advice Wiltshire and Wessex Community Action, under the umbrella Carers Together Wiltshire. The Carers Together Wiltshire partnership offers tailored support to the thousands of individuals across Wiltshire identified as a carer.

As part of our work with Carers Together Wiltshire, Community First offers support for parent carers who provide additional care to their child who needs more help and support. This includes a support conversation to discuss individual parent carer needs, information/advice and signposting to other support services. We can carry out a Carers Assessment for parent carers caring for a child over the age of 18 if they meet the eligibility criteria for a funded service. For more information about parent carer support through Carers Together Wiltshire, please see the parent carer support pathway included with this briefing pack. An information postcard is also included in the briefing pack.

The Carers Together Wiltshire team held three parent carer drop-in events in Chippenham, Trowbridge and Salisbury over the summer, with further drop-in events planned for the autumn. Please keep an eye on our Facebook page and newsletter (see below) for more information about upcoming drop-in events: www.facebook.com/communityfirstwiltshire

Parent Carers Newsletter

If you are a parent carer and you would like to be kept up to date with information including resources, events, drop-ins and other news, please subscribe to the parent carers newsletter using the sign-up form below. We would be grateful if you would also share this link with other parent carers in your newsletters and on your website: <https://mailchi.mp/93192f1024d4/parent-carers-newsletter>

Wiltshire Community-Led Housing

Community First and Wiltshire Community Land Trust are working in partnership to deliver Wiltshire Community-Led Housing. We believe Community-Led Housing offers an opportunity for local people to come together and provide the kind of homes their communities need for the future. Wiltshire Community-Led Housing is an independent advisory and support service, and we are here to support anyone in Wiltshire and Swindon who is interested in finding out more about Community-Led Housing. This includes town and parish councils, new groups and established groups. If you would like to find out more, please email: info@wiltshirecommunityledhousing.org.uk.

Rural Housing Enabler Project

Community First has been involved with the promotion and support of Community-Led Housing for several years working with Wiltshire Community Land Trust, Wiltshire Council, Swindon Borough Council and local housing associations. Community First has recently secured funding from DEFRA to employ a Rural Housing Enabler (RHE) Consultant and develop an active partnership group to help raise awareness of the lack of affordable housing for local people in rural areas and encouraging and supporting communities to help make provision for new homes. The team is currently responding to initiatives in Holt, Aldbourne and West Lavington. Current funding for this project is for a very limited period, up to the end of March 2025, so any groups and parishes interested in support should contact info@wiltshirecommunityledhousing.org.uk as soon as possible.

Employability Programmes

The Building Bridges Programme has recently received funding from The Ministry of Housing, Communities and Local Government via Wiltshire Council's Rough Sleeper Initiative's 'Move on and Prevention Funding' to support people in Wiltshire who are accommodated in housing related supported accommodation. If you would like support, please contact the dedicated rough sleeper team by email to roughsleeperteam@wiltshire.gov.uk, phone Housing Solutions 0300 456 0106, or speak to your HMO Manager.

Minibus Driver Training (MiDAS)

Community First offers MiDAS Minibus Driver Training, a nationally recognised standard for drivers of minibuses that offers training for members of staff and volunteers to drive minibuses to ensure they transport adults and children safely. MiDAS training offers the following benefits for your organisation:

- The Department of Education and Department for Transport highly recommend that all minibus drivers complete MiDAS training.
- Some insurance companies offer lower premiums on completion of this training.
- Drivers gain more valuable experience and feel more confident in driving minibuses and will become more competent and safer minibus drivers.

Community First is offering the new national MiDAS training programme. The theory module is now completed individually by drivers prior to undertaking a practical assessment. Upon application drivers will be allocated a 'learner pass' to access the Community Transport Association (CTA) learning portal.

Once this module has been completed one of our Driver Assessors will arrange to visit clients to complete a theory follow up followed by the driving assessment. On successful completion of both theory and practical, drivers will be able to log on the CTA portal to print off their personal MiDAS certificates.

Community First employs two highly qualified and experienced MiDAS trainers. Demand for training is high and will increase as we move towards the autumn and start of the new school year. Please book early to ensure your drivers are up to date with their training.

If you would like any further information on MiDAS training, please contact Martin Carter:
mcarter@communityfirst.org.uk.

Youth Action Wiltshire Golf Day

The Youth Action Wiltshire Annual Golf Day will take place on Friday 13th September 2024 at the North Wiltshire Golf Club, near Devizes. Please bring a team.

The funds raised from this event will go directly to our Young Carers and Splash services for exciting and sessions for Wiltshire young carers and young people facing challenges in their lives. These will include sports, music, arts, wildlife and well-being activities.

For further information contact Becca Worsley via email: beccaworsley@gmail.com

Youth Action Wiltshire Carol Service

The popular Youth Action Wiltshire carol service 'Carols by Candlelight' will take place on Friday 13th December 2024 at the usual venue of Malmesbury Abbey. Further details about the event will be released shortly.

For more information or to request tickets, please email Ginnie Keen: ginniekeen@gmail.com.

Alternative Provision at Oxenwood and Linkenholt

Community First has been approved as a provider of alternative provision delivered at our Outdoor Education Centres. Oxenwood and Linkenholt Centres provide a valuable learning experience for vulnerable children and young people. The Centres can support young people who may struggle to access mainstream education, including those who face social and academic exclusion. Under the leadership of our trained and experienced Outdoor Education Instructors, we foster a nurturing and positive environment where young people feel safe, heard and valued. Our Centres offer a place to unwind, connect with nature and experience the many positive benefits of adventure and outdoor education.

Our curriculum focuses on social, emotional, and physical development whilst emphasising the development of essential skills including resilience, motivation, self-control, confidence, and independence. Our commitment to high-quality experiences ensures that schools, clubs, and groups can access our day activities, and we are dedicated to making a positive impact on the lives of young learners. Young people can be referred to us if:

- They lack engagement in school
- Have underdeveloped life-skills
- Have low attendance and attainment
- Experience poor mental well-being and self-esteem issues
- Have anxiety
- Have a pattern of negative relationships with adults and peers
- Lack of pro-social behaviours

For more information please visit: <https://www.oxenwood.org.uk/alternative-provision/>

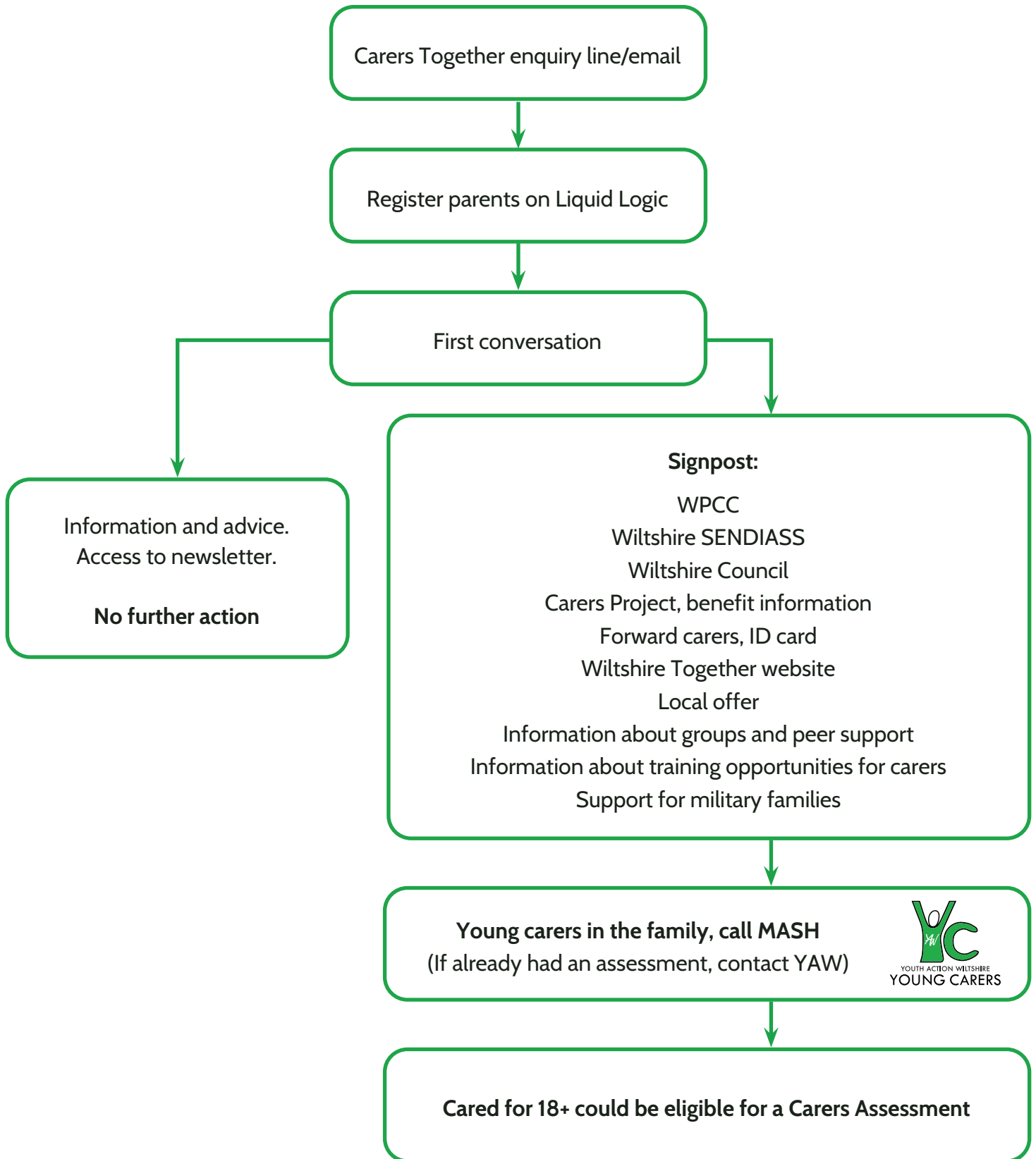
Briefing prepared by:

Ellie Ewing

Marketing and Communications Manager (Community First)

eeewing@communityfirst.org.uk

Parent Carer Support Pathway





**COMMUNITY
FIRST**



**Carers Together
Wiltshire**

Page 19



Help for parent carers in Wiltshire

**Are you a parent carer, providing care to
your child who needs additional support?**

Community First can offer a range of help
and support for parent carers through the
Carers Together Wiltshire partnership.

01380 710 300

enquiries@carerstogethertwiltshire.org.uk

**[www.communityfirst.org.uk/carers-
together-wiltshire](http://www.communityfirst.org.uk/carers-together-wiltshire)**

Community First is a registered charity (288117)

Useful contacts for parent carers

Wiltshire Parent Carer Council

Information, signposting and support for parent carers of children and young people with SEND.

www.wiltshireparentcarercouncil.co.uk

01225 764647

Wiltshire SENDIASS

Support around education for young people and their families.

01225 255266

Wiltshire Council's Adult Social Care

If your child is over 18

0300 456 0111 (out of hours: 0300 456 0100)

Integrated Front Door (Children's Services)

If you are worried about a young person under 18.

0300 456 0108 (out of hours: 0300 456 0100)

If you have a young carer in your family who needs support please refer them through the above telephone number to access our services.

Forward Carers

A range of online resources to support you in your caring role, including a benefits calculator. You can register for a Carers ID Card, access online support groups and self-refer for help from local services.

www.carerfriendlywiltshire.org.uk

Turn2Us

National charity that helps people in financial hardship to gain access to welfare benefits, charitable grants and support services.

www.turn2us.org.uk

Sign up for our newsletter.
Scan the QR code or visit:
<https://tinyurl.com/2h2fne5v>



Community First - AGM and Awards Celebration

Thank you to everyone who has responded to our invitation for the Community First AGM and Awards Celebration which will take place on **Wednesday 9th October 2024 (5.30-7.30pm)** at the Town Hall in Devizes. We look forward to seeing you there.

New Alternative Provision Offer for Wiltshire Schools - Limited Places Available

We are now accepting pupil referrals for our Alternative Provision offer at Oxenwood Outdoor Education Centre and Linkenholt Countryside Adventure Centre. The provision has been inspected and approved by Wiltshire Council and schools can find out more via the Alternative Provision Portal on the Right Choice website or via our website: www.oxenwood.org.uk/alternative-provision. There are currently a limited number of places available. Schools who are interested in the Alternative Provision offer should arrange a place as soon as possible to take advantage of this fantastic opportunity for young people to experience the many benefits of adventure and outdoor learning.

Community Transport Services - Directory

If your organisation works with people in rural areas, you may already be aware of the service provided by Link Schemes and Community Minibus Groups. Community transport services offer a vital lifeline to local facilities and medical care for people across the county. Community First offers support to local transport groups and provides a directory of contact details for individual Link Schemes and Community Minibus Groups. This directory can be filtered by approximate location e.g. nearest town and by keyword search for specific local areas.

Demand for access to transport services has increased in recent years. We have also seen an increased volume of requests for help with transport which are being sent directly to Community First. Whilst we offer support to local transport services, we cannot make transport arrangements for individuals directly. If you work with people who need help with transport e.g. for medical appointments, please share the link to the Community Transport Directory with them so they can contact their local service:

Transport Directory: <https://www.communityfirst.org.uk/transport/directory/>

Health Research Champions - Help Shape the Future of Health Research

Your voice matters in health research. We believe that health research should include everyone, so all people have a chance to join and benefit. We are particularly interested in hearing from people with disabilities and people from our global majority communities.

What Can Research Champions Do?

- **Raise Awareness:** Help people learn about health and care research and encourage them to join.
- **Speak to Groups:** Talk to patient and community groups about health and care research.
- **Share Information:** Help people find out about research studies, like those on Be Part of Research and Join Dementia Research.
- **Join Media Interviews:** Take part in interviews to help spread the word about research.

- Work with Schools: Visit schools and other learning places to promote research.
- Attend Events: Participate in local events and activities to support research.

Why Become a Research Champion?

- Make a Difference: Have a positive impact on health care and treatments.
- Share Your Story: Offer your experiences and insights to help others.
- Connect with Others: Meet people who share your interests and work with professionals.
- Learn and Grow: Gain new skills and knowledge.

Join Us Today and Make a Difference!

Together, we can make sure that health research includes everyone and meets everyone's needs. Our Motto: *"No Research About Us, Without Us."* Let's work together to make sure health research includes and helps all people. Become a Health Research Champion today!

If you'd like to register to become a Health Research Champion, please complete this registration form: <https://www.cognitofrms.com/CommunityFirst2/HealthResearchChampionRegistrationForm>

To find out more without committing please contact: askyring@communityfirst.org.uk. We can share more information and discuss what support and training is available should you wish to join.

A poster is also included with this briefing pack which includes information that can be shared with your contacts and networks, on your website and in newsletters.

Parent Carer Drop-in & Online Sessions for Autumn 2024

Sessions are available throughout the Autumn and a list of upcoming face-to-face and virtual groups for parent carers. Dates, times and locations can be found below:

- **Tuesday 1st October 2024**, Support group, 2:30-4pm, Trowbridge Family Hub, County Hall. Drop in.
- **Thursday 17th October 2024**, Virtual evening group, 7-8pm on Teams.
- **Wednesday 6th November 2024**, Support group, 10:30am to 12pm, Community First meeting room, Devizes. Drop in.
- **Thursday 21st November 2024**, Virtual evening group, 7-8pm.
- **Wednesday 4th December 2024**, Support group, 10:30am to 12pm, Cosy Club Salisbury. Drop in.
- **Thursday 19th December 2024**, Virtual evening group, 7-8pm. Christmas Quiz.

A representative from Forward Carers will be attending the first two face to face sessions, to talk about their online offer for carers, and the new carers ID card. For the online sessions, please email Jo Hiller-Culley for the link: jo.hiller-culley@carerstogetherwiltshire.org.uk

Voice It, Hear It

We have previously included information about the Voice It, Hear It project in updates for Area Boards. Voice It, Hear It, is a co-production and engagement project that unifies the collective strength of its partners to support the voice and engagement of people in Wiltshire. The project is funded by Wiltshire Council and BSW ICB and delivered by Community First, Wessex Community Action, Wiltshire Service Users Network, Age UK Wiltshire, Alzheimer's Support and Celebrating Age Wiltshire.

The Voice It, Hear It team is continuing to support Wiltshire Council, BSW ICB and other partners to deliver engagement projects on a variety of topics. Topics for Autumn 2024 include technology, health screening, dental care and accommodation. As mentioned in our September briefing, there is also an opportunity for extended partners to join our Voice It, Hear It Engagement Network.

In addition to direct engagement through face to face groups and meetings, the project also offers opportunities to participate online through surveys. A list of current surveys and other opportunities to be involved can be found on the Voice It, Hear It landing page on the Wiltshire Together website:

<https://wiltshiretogether.org.uk/voice-it-hear-it>

Scroll down to the section called 'Voice It, Hear It activities' for a list of current surveys.

Please share this link with your contacts and service users (if appropriate) so that we gather as much useful feedback as we can about local services. This will help to inform the creation of new services or change the way services are delivered locally to make them better for the future.

www.communityfirst.org.uk/voice
voice@communityfirst.org.uk

Facebook: Voice It, Hear It
Instagram: @WiltsVoice

Briefing prepared by:
Ellie Ewing
Marketing and Communications Manager (Community First)
eeewing@communityfirst.org.uk

Join us as a Health Research Champion!

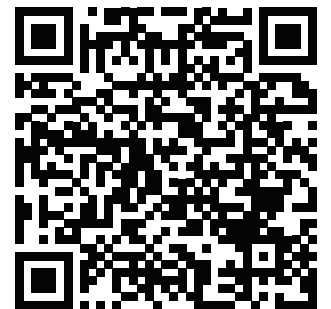
COMMUNITY
FIRST



Help shape the future of health research

Your voice matters in health research! We believe that health research should include everyone, so all people have a chance to join and benefit. We are particularly interested in hearing from people with disabilities and people from the global majority.

Scan to register interest
as a Health Research
Champion



What can Research Champions do?



Raise awareness:

Help people learn about health and care research and encourage them to join.



Speak to groups:

Talk to patient and community groups about health and care research.



Share information:

Help people find out about research studies, like those on Be Part of Research and Join Dementia Research.



Join media interviews:

Take part in interviews to help spread the word about research.



Work with schools:

Visit schools and other learning places to promote research.



Attend events:

Participate in local events and activities to support research.

Why become a Research Champion?

Make a difference:

Have a positive impact on health care and treatments

Share Your story:

Offer your experiences and insights to help others.

Connect with others:

Meet people who share your interests and work with professionals.

Learn and grow:

Gain new skills and knowledge.

Join us today and make a difference!

Together, we can make sure that health research includes everyone and meets everyone's needs.

Our Motto: "No Research About Us, Without Us"

Let's work together to make sure health research includes and helps all people. Become a Health Research Champion today!

To find out more without committing, please email:

askyring@communityfirst.org.uk

Scan to register
interest



Community First, Unit C2, Beacon Business Centre, Hopton Park, Devizes, SN10 2EY.

Registered Charity No: 288117.

VAT Registration No: 639 3860 06

Company Limited by Guarantee Reg. No: 1757334 England

Registered with the Financial Conduct Authority No: FRN 311971



The value of listening

Healthwatch Wiltshire
Annual Report 2023-2024



healthwatch
Wiltshire

Message from Chief Executive Officer

As CEO of TCF I am SO proud that we are now able to deliver Healthwatch Wiltshire as part of our Healthwatch family, more specifically as part of the Bath and North East Somerset, Swindon and Wiltshire Integrated Care Board (ICB) footprint.

Healthwatch Wiltshire has a wonderful history. Our volunteers, staff and stakeholders have worked incredibly hard over the past 12 months, this document goes some way to share the work and passion that they share for Healthwatch.

This year has been a time for reflection and vision planning. There are many good things about how Healthwatch has been delivered in Wiltshire, but I look forward to establishing new approaches to listening, planning and implementing an effective service. I am keen that during the course of the coming year we involve student placements and embed our new governance approach.

Healthwatch Wiltshire is incredibly well respected and comes with a dedicated group of advocates. Ensuring that the people of Wiltshire are heard and informed is key to our continued success. Our focus will remain on a locally delivered service whilst creating regional intelligence. We seek to create cohesion across our projects at a strategic level ensuring that peoples views are always shared locally and when necessary shared as part of a regional approach.

I'd like to place on record my thanks to all involved in the transition period, volunteers, staff and commissioners, and look forward to working alongside you all in the coming year.

Kevin Peltonen-Messenger
CEO,
TCF



Contents

Message from our CEO	2
Message from the Chair	5
About us	6
Year in review	7
Your voice heard at a wider level	8
Listening to your experiences	10
Ways we're making a difference	14
Hearing from all communities	16
Advice and information	18
Volunteering	20
Finance and future priorities	22
Statutory statements	24



“Over the last year, local Healthwatch have shown what happens when people speak up about their care, and services listen. They are helping the NHS unlock the power of people’s views and experiences, especially those facing the most serious health inequalities.”

Louise Ansari, Chief Executive at Healthwatch England





Clockwise from top: Melksham Fete in July 2023; the Healthwatch England Conference in September 2023; welcoming David Croisdale–Appleby, Chair of Healthwatch England, in August 2023; a volunteer day focusing on future project ideas in November 2023; and our Christmas party in December 2023.

Message from our Chair

As your health and social care champion, the Healthwatch Wiltshire team continues to ensure that your voice is heard by local services.

I hope this report finds you well. This year has had a big focus on reaching out to communities we don't often hear from.

Our work with Wiltshire Council's Ethnic Minority and Traveller Achievement Service (EMTAS) and children's charity Spurgeons has helped us to understand more about the experiences of Afghan refugees, Eastern Europeans and Boaters in how they access services.

We've also heard from autistic people and their carers on what they think of mental health services in Wiltshire and we're keen to see how these services can be developed following the recommendations we've made in our report.

Working closely with our partners across the health and care system has been another key theme this year. We're pleased to have been involved in the development of information and resources to help ease the process of leaving hospital, and be at the heart of the new network of Neighbourhood Collaboratives as they launch across Wiltshire.

And I'm particularly proud that our volunteers have played a pivotal role in the design of a new complaints guide for Salisbury District Hospital. The volunteers' meticulous work to ensure the new guide was patient friendly has meant it's the hospital's first publication to carry the coveted 'patient reviewed' stamp.

I would like to extend a huge thanks to our dedicated staff team and our wonderful volunteers whose hard work and commitment enabled us to achieve so much over the year.

Following a procurement exercise undertaken by Wiltshire Council, Healthwatch Wiltshire moved to a new provider in January 2024.

Thank you to everyone who has shared their views and experiences with us. Sharing your feedback really does make a difference.



Alan Mitchell
Healthwatch Wiltshire Chair



This year has had a big focus on reaching out to communities we don't often hear from.

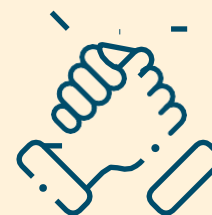
About us

Healthwatch Wiltshire is your local health and social care champion.

We make sure NHS leaders and decision-makers hear your voice and use your feedback to improve care. We can also help you to find reliable and trustworthy information and advice.

Our vision

A world where we can all get the health and care we need.



Our mission

To make sure people's experiences help make health and care better.



Our values are:

- **Listening** to people and making sure their voices are heard.
- **Including** everyone in the conversation – especially those who don't always have their voice heard.
- **Analysing** different people's experiences to learn how to improve care.
- **Acting** on feedback and driving change.
- **Partnering** with care providers, Government, and the voluntary sector – serving as the public's independent advocate.



Year in review

Reaching out:

1,142 comments

from people who shared their experiences of health and social care services with us, helping to raise awareness of issues and improve care.

4,397 people

came to us for clear advice and information about topics such as mental health and registering with a GP.



Making a difference to care:

We published

3 reports

about the improvements people would like to see in health and social care services.

From these we made

14 recommendations

for improvement.



Health and social care that works for you:

We're lucky to have

15 volunteers

who gave up **470 hours** to make care better for our community.

We currently employ

4 staff

who help us carry out our work.

We're funded by our local authority. In 2023-24 we received

£165,496



Your voice heard at a wider level

We collaborate with other Healthwatch and the Bath and North East Somerset, Swindon and Wiltshire Integrated Care Board (BSWICB) to help influence decisions made about services across the region.



Developing resources to support hospital discharge

We have been working with staff across the BSW health and care system to develop new leaflets, videos and information resources that help provide extra support for patients, families and carers during their discharge from hospital.

The resources, which also provide information and support for health and care professionals, support a new programme of work called Caring Steps Together, which has been established to improve people's understanding of what can sometimes be the confusing process of leaving hospital and accessing follow-up care.

The new resources, which launched in December 2023, will help support patients, their families and carers to understand the process of leaving hospital and the other services available to provide support in the community. The resources are available digitally and as printed leaflets to download from the [BSW Together website](#).



“In late 2022, partly through work led by Healthwatch Wiltshire, BSWICB identified a need to significantly change and improve the way we share information about being discharged from hospital if people need support at home or are going into a care home. It took a year to work with partners to truly understand what our population and colleagues needed, how they wanted to access it and even how they wanted it to look.

“Caring Steps Together launched in late 2023 and has reached and helped thousands of people to understand what their pathway looks like, what decisions they might want to make and who they can talk to for more support. Healthwatch Wiltshire was a consistent and supportive partner through that process, always advocating for Wiltshire residents at every opportunity and fundamentally helped to shape and deliver on our shared ambitions to help improve people’s experience of our services.”

Emma Higgins, Associate Director – Wiltshire Integrated Care Alliance Programme and Delivery Lead, BSW ICB



We join new neighbourhood initiative

In 2023, we were invited to join the Neighbourhood Collaboratives initiative, which aims to reduce health and wellbeing gaps in our local communities.

The collaboratives, which include partners from health and social care, local authorities, the voluntary and community sector and police and fire services, are currently being set up across the region by the BSW Integrated Care Board.

We have joined the steering group of the Wiltshire Collaborative Network, which oversees these Neighbourhood Collaboratives, and brings them together to share information and learning.

As more Neighbourhood Collaboratives become established, we'll be monitoring how they work together to tackle local health and wellbeing challenges.



“We’re two years into the [Neighbourhood Collaboratives] work to build broad alliances across Wiltshire and in each Primary Care Network neighbourhood, focusing on prevention and reducing health inequalities. Healthwatch Wiltshire has been an integral part of developing this approach and has walked side by side in promoting and supporting it towards sustainability.

“Neighbourhood Collaboratives aim to be led by the voice of residents in each area – Healthwatch Wiltshire continue to be a partner and critical friend in building new relationships and connection with our residents to ensure our work is meaningful and focused on things that matter to the community.”

Emma Higgins, Associate Director – Wiltshire Integrated Care Alliance Programme and Delivery Lead, BSW ICB



Survey focuses on eating disorders

Working with our Healthwatch colleagues in Swindon and Bath and North East Somerset, a survey was launched in early 2024 which asked for people's views on eating disorders and disordered eating – and if enough support is available in the region. Volunteer Jasmine Fawcus-Smith presented the project at our Mental Health Open Forum in March 2024 and highlighted that a lack of communication between patients and services, a lack of knowledge among healthcare professionals, and delays in accessing support were coming through as key themes. The survey has since closed and we'll be sharing the findings in due course.



Listening to your experiences

Services can't make improvements without hearing your views. That's why, over the last year, we have made listening to feedback from all areas of the community a priority. This allows us to understand the full picture, and feed this back to services and help them improve.

Improving mental health services for autistic people

In May 2023 we launched a project to find out what autistic people thought about mental health services in Wiltshire. BSW ICB is now developing an action plan to address the issues we raised in our report.

Working with Wiltshire Service Users Network (WSUN), we developed two surveys – one for autistic people and one for their families and carers. Autistic people told us of their desperation and frustration at not being able to get the support they need for their mental health. They said they felt isolated and misunderstood, falling between the gaps in services which aren't designed to meet their needs and where staff lack training and awareness to support them.

What did we recommend?

- Deliver autism training for all mental health staff, preferably led by an autistic person or someone with lived experience.
- Provide more staff in Child and Adolescent Mental Health Services (CAMHS) and mental health services who understand autism.
- Create mental health solutions/therapies that are more suited and helpful to autistic people, recognising their neurodivergence.
- Recruit specific professionals to help at times of crisis with respite/practical support/network coordination and support for the carer.
- Recognise that an autistic person may mask their condition – assess them more than once or ask a carer/family member for their input and views.
- Provide options for how people contact a service – offer online/email contact to those who have difficulty making phone calls, and vice versa.
- Provide more face to face contact if it's easier for the autistic person.



“The findings and outcomes of this report shine a spotlight on the importance of continuing to improve access and service provision for people with autism and their families and carers in Wiltshire.

“The views and experiences of people who have accessed services are paramount in guiding service transformation, and this report highlights where people want to see improvement in current service provision.

“We will ensure that their recommendations form part of our review of the Wiltshire Autism Strategy as well as the further development and implementation of our BSW ICB Learning Disabilities & Autism, and Mental Health transformation programmes.”

Gordon Muvuti, Director of Place Swindon and BSW Executive Director for Mental Health, BSW ICB

Improving a hospital's complaints process

In autumn 2022, we carried out a piece of work to [hear your views on making a complaint at Salisbury District Hospital](#), which made several recommendations to make information about the complaints process easier to understand.

Following on from this work, the hospital has since introduced a new Complaints Handling Policy and created a new Guide to Complaints, Concerns, Comments and Compliments.

The redeveloped leaflet underwent a vigorous review by Healthwatch Wiltshire volunteers and further reviews by the hospital's patient readership groups. See our [You Said, We Did](#) for more.

What difference did this make?

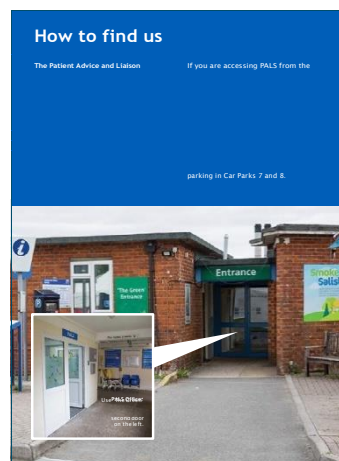
Our volunteers, as well as the hospital's Patient Experience Steering Group, were involved in the development of a new leaflet to ensure that it's patient friendly. Their suggestions included:

- A clear, Plain English guide to the process with a reassuring, friendly tone
- An emphasis on who the Patient Advice and Liaison Service (PALS) team are and what they do
- Map and photos of where the team is

Digital and printed versions of the guide are now available, as well as an accessible version compatible with screen readers, and an Easy Read version.



The new-look leaflet was launched in October 2023 and is the first publication to carry the hospital's new 'patient reviewed' stamp.



“Healthwatch Wiltshire continue to work in collaboration with the Patient Experience team here at Salisbury Hospital. They are a regular and valued presence within our monthly Patient Experience Steering Group (PESG) and continue to support our service improvement plans related to our Complaints process.

“I would like to take this opportunity to extend my thanks to our colleagues at Healthwatch Wiltshire who continue to work with us to improve our services for the benefit of our patients.”

Victoria Aldridge, Head of Patient Experience at Salisbury District Hospital

Understanding how people order prescriptions

We worked with Bath and North East Somerset, Swindon and Wiltshire Integrated Care Board (BSW ICB) to find out which prescription ordering service people liked to use, how easy they found the process, and how important the service was to them.

We received 380 responses to our short survey, which ran for two weeks in October 2023. As well as an online survey, we took paper copies to several pharmacies across Wiltshire, where we talked to patients as they collected their prescriptions.

What did people tell us?

- Most people told us they found ordering prescriptions easy, and used a variety of methods including SystmOnline, the NHS App and Prescription Ordering Direct (POD).
- The majority of respondents said being able to order repeat prescriptions was very important to them, but long waits for medication and shortages of preferred brands were among the concerns they raised.
- Other issues included poor internet availability, or a lack of confidence in using online services, as well as a frustration at not being able to get repeat prescriptions for longer than one month, particularly when someone had a long term condition.

We made a number of recommendations based on our findings, which included:

- Improve awareness of the NHS App among patients, as most people only use the system selected by their GP surgery or Primary Care Network.
- Consider increasing the length of timeframe for repeat prescriptions.
- Improve the reliability of collection or delivery dates for prescriptions.
- Address concerns about availability/shortage of medications.
- Consider how changes to brands of medication could be accommodated without needing to revisit a surgery for a new prescription if the prescribed medication is not available.
- Ensure patients are aware that some pharmacists offer a delivery and a postal service.

The feedback we received was welcomed by BSW ICB. With the current winding down of the POD service in Wiltshire, which is due to close in June 2024, we will continue to monitor feedback on prescriptions.



“We will be reviewing the feedback and using it to help inform our understanding. We recognise not just the different perspectives reflected in the report, but also the differing needs of our population with some patients potentially very well served by digital solutions and others where alternative access routes are more suitable. Should anything need to be undertaken differently we will be clearly communicating in a planned and considered way.”

Bath and North East Somerset, Swindon and Wiltshire Integrated Care Board

Ways we're making a difference

Throughout our work we aim to ensure everyone's experiences are heard.

Key recommendation leads to creation of women's clinic

Our survey asking [which services people would like to see at the Devizes Health Centre](#), which opened in 2022, has led to the creation of a women's health clinic.

More women's services was one of our key recommendations from the survey, which heard from more than 2,500 people. Devizes Primary Care Network (PCN), a collective of four GP surgeries in the town, took this on board:



“Following a comprehensive survey completed by Healthwatch, we were informed that improved Women's Health Services in our PCN would be welcomed by our patients. We now provide comprehensive women's health services in a dedicated clinic, once a week, between 6.30pm and 8pm. The clinic is staffed by clinicians who are interested and trained in Women's Health, who opt to work in the clinic instead of, or in addition to, their core hours. To date, the clinic has never been short staffed and is proving popular with patients and staff alike.

“Patient feedback has been sought after every consultation and has been overwhelmingly positive. Demand is extremely high [and] we have applied for local funding which is aimed at expanding the service. We intend to use the funding to provide some dedicated training to clinicians interested in developing their skills, so we can improve patient access for these appointments, in a sustainable way.”

Helen Scott, Primary Care Network Manager, Devizes

School sessions focus on wellbeing

In early December we visited Warminster School to continue to hear the views and experiences of children and young people, particularly around emotional wellbeing.



We shared a wellbeing session with 60 students across Years 10, 11 and Sixth Form followed by a discussion around what wellbeing was to them and what they thought about services.

Key themes that emerged were how aware they are of things that can affect people's wellbeing and also of the warning signs that all is not well. Coping strategies were discussed, both positive and negative, and there was some useful feedback on services in Wiltshire.

We call on local people to help us set our priorities

In March 2024, we called on local people to tell us what they thought our priorities should be for 2024-25. We travelled across Wiltshire and hosted an online survey asking people to choose from six potential projects:



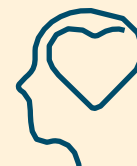
- The wellbeing of children and young people
- Pharmacy
- Care at home
- Accessibility of health services
- How the cost of living is affecting our health
- The impact of living in a rural county

We were delighted to receive 211 responses to our short survey, and a wealth of comments and insights. Our work for the year ahead will be driven by what people told us is important to them and we will ensure Wiltshire residents continue to play a key role in helping to shape services.

See **page 23** for our new priorities.

Mental Health Forum helps highlight gaps in services

Our Mental Health Open Forum is a collaboration between us, services users and mental health provider Avon and Wiltshire Mental Health Partnership NHS Trust (AWP) and provides a unique opportunity for people to speak directly to those who run services.



The online forum has regular guest speakers, which this year covered a wide range of topics including AWP's North Wiltshire Intensive Service, advocacy, domestic abuse, and Survivors of Bereavement by Suicide. It also provided a way for members to hear progress on the Community Mental Health Framework and an update on AWP's Care Quality Commission inspection.

This sharing of information means members are able to get involved in the shaping and development of mental health services in Wiltshire. In 2023-24 members have highlighted where there are gaps in local services for conditions such as Post Traumatic Stress Disorder (PTSD) and that adapting existing services to suit autistic people's needs, such as Talking Therapies, should be considered.



“As a mental health service provider, the Mental Health Open Forum continues to be an extremely beneficial platform, not just from a client perspective but also from the organisational perspective. The forum provides a great two-way link to the NHS mental health services and strengthens the communication, feedback and learning between the clinical provision (under AWP) and the community provision our charity provides. Most importantly it provides a useful channel for those we are supporting to give their comments on the care they have been receiving, for this to be heard and for actions to be taken – the key element being ‘You Said, We Did’. It also enables great networking and information sharing opportunities, providing the right contacts and an audience where questions can be answered and followed up on efficiently – all aiding our organisations awareness and the cascading of information to those we support.”

Jonathan Baker, Digital Officer, Rethink



Hearing from all communities

Over the past year, we have worked hard to make sure we hear from everyone within our local area. We consider it important to reach out to the communities we hear from less frequently to gather their feedback and make sure their voice is heard, and services meet their needs.

This year we have reached different communities by:

- Working with Wiltshire Council's Ethnic Minority and Traveller Achievement Service (EMTAS) and children's charity Sprugeons to offer advice and support to minority groups including Eastern Europeans, Afghan refugees and Boaters.
- The project continues in 2024, where we'll be talking to Bangladeshi and Nepali communities, and Travellers.

Hearing from minority groups

We're working with Wiltshire Council's Ethnic Minority and Traveller Achievement Service (EMTAS), and children's charity Spurgeons to offer support and advice to minority groups, particularly where English is not their first language.

This work, funded by NHS Charities Together, aims to signpost key medical services and deliver activities to support families' mental health and wellbeing.

Supporting the Eastern European community

Sessions in June and July 2023 were held at the Polish Community Centre, Trowbridge, with interpretation provided in Polish, Romanian, and Ukrainian. We were there to provide information and signposting, while Spurgeons ran activities for children and offered practical advice for families. Common themes included:

- Finding support for children with special or additional needs
- Where to get support for domestic abuse
- Dealing with loneliness and isolation
- Accessing GP services.

Supporting the Boater community

We also held sessions with the Boater community in July 2023, at the Canal Tavern, Bradford on Avon and the Barge Inn, at Honeystreet, near Pewsey. Boaters told us of their difficulty accessing services such as GPs and dentists, and their problems collecting prescriptions, often because they have no fixed address and have to move moorings every two weeks.

Women in the Boater community highlighted their uncertainty around antenatal care and childbirth due to their constant travelling patterns, and were reluctant to engage with health visitors as they didn't seem to understand the Boater lifestyle. A lack of public transport in rural areas also creates difficulties getting to healthcare appointments, as few Boaters have a car. Read more about this work [on our website](#).

Supporting Afghan refugees

In March 2024, we met around 40 families of Afghan refugees who had helped British forces in Afghanistan and have been settled in army bases across Wiltshire. We visited military bases at Perham Down, Larkhill and Lyneham to find out how these families were accessing health and care, education and early years support, and to hear their experiences of getting the help they needed. Key themes included:

- Lack of ability to speak English makes accessing health and care very difficult particularly as Dari and Pashto interpreters are not always available
- Difficulty/unavailability of accessing public transport and cost of getting to appointments
- Lack of social integration and isolation
- Not knowing where to go to get help or access sports and social activities.

What happens next?

The final phase of this project, in summer 2024, will see us reach out to Bangladeshi and Nepali communities and Travellers.



Advice and information

If you feel lost and don't know where to turn, Healthwatch is here for you. In times of worry or stress, we can provide confidential support and free information to help you understand your options and get the help you need.

This year we've helped people by:

- Providing up to date information people can trust
- Helping people access the services they need
- Supporting people to look after their health

Explaining GP access rights to a Boater

James*, a single older man, had suffered a brain injury after being attacked. He has ongoing medical issues and needs daily medication. He uses the NHS App but, as a Boater, finds it difficult to collect prescriptions as he uses his sister's address and does not have a fixed address. He explained he was not getting the correct dosage of one of his medications and had tried to speak to the GP receptionist to have this corrected. They insisted he needs to see a doctor but that is not possible given his travelling pattern.

We were able to give the man [a card that outlines his rights to access GP services](#) despite having no fixed address. We directed him to a surgery that is accessible given his current cruising pattern and where we know the needs of the Boater community are well understood. The man was grateful for being listened to and thanked us for our support.

Helping to find an NHS dentist

Cynthia* was pregnant and moved around a lot as her husband was in the military. She needed her teeth looked at as they were sensitive and bled often due to pregnancy. Her midwife advised her that she is entitled to free dental checks as she is pregnant. Cynthia told us she had already contacted NHS England who advised there was nothing they could do to help at the time and advised her to continue to look around.

We suggested she visited the NHS website to find a dentist and organisations who can provide advice online, such as the Oral Health Foundation and eLearning for Healthcare. We also advised her to contact NHS 111 if she experienced any pain or discomfort.

Advice on registering with your GP is most visited page

An article which helps people [understand their rights when registering with a GP](#) has been the most visited page in the advice and information section of our website.

The page provides answers to frequently asked questions such as how do I register? and advice on what to do if you have problems registering. There are links to further information, particularly if you are an asylum seeker, refugee, a homeless patient or an overseas visitor, as well as to the My Right to Healthcare card to help people register.

The page has been visited 619 times this year.

*Names have been changed.



Volunteering

We're supported by a team of amazing volunteers who are at the heart of what we do. Thanks to their efforts in the community, we're able to understand what is working and what needs improving.

This year our volunteers:

- Attended events to promote Healthwatch Wiltshire and what we have to offer
- Collected experiences and supported local people to share their views
- Passed on advice and information



“I decided I’d like to do some volunteering and was introduced to Healthwatch by a friend. With my background as an Occupational Therapist, I have always been interested in health issues. I am particularly interested in improving health care for older people, as after being a carer for my parents for over 10 years, I realised there are often gaps in the care provided. Also, after working in a primary school, I developed an interest in the emotional wellbeing of children and young people. I feel this is an area that needs more research and resources. I have only joined Healthwatch recently and I am planning to help with a Mental Health Awareness Week at local colleges. I have also offered to help with a project looking at how the health and support needs of military personnel and their families are being met in Wiltshire. I look forward to being part of Healthwatch Wiltshire.”



Alison



“My background is in care and education working for Social Services in Berkshire and then across the South of England inspecting for Ofsted. I moved to Wiltshire in 2005 and on early retirement I wanted to continue to support families. I firstly volunteered for Homestart before transferring to Healthwatch on its formation in Wiltshire. I have undertaken a range of activities with Healthwatch giving talks, conducting surveys, helping at events, and developing materials, to support our work in Enter and View visits to publicly funded health and care providers. I help to train other volunteers in our role as visitors to the providers and particularly enjoy supporting others in this way. Volunteering is a great way of meeting new people and giving your spare time to supporting improvements for Wiltshire residents.”



Elizabeth

Do you feel inspired?



We are always on the lookout for new volunteers, so please get in touch today.

 healthwatchwiltshire.co.uk/volunteer

 01225 434218

 info@healthwatchwiltshire.co.uk



Finance and future priorities

To help us carry out our work we receive funding from our local authority under the Health and Social Care Act 2012.

Our income and expenditure - Help and Care (April-December 2023)

Income		Expenditure	
Funding received from local authority	£119,746	Staff cost	£80,042
Additional income - NHS Charities Together EMTAS project	£600	Operational costs and administration	£16,424
		Support and administration	£45,835
Total income	£120,346	Total expenditure	£142,301

Our income and expenditure – The Care Forum (January-March 2024)

Income		Expenditure	
Funding received from local authority	£44,250	Staff cost	£32,842
Additional income – NHS Charities Together EMTAS project	£900	Operational costs	£11,938
		Support and administration	£2337
Total income	£45,150	Total expenditure	£47,117
Overall income 2023-24	£165,496	Overall expenditure 2023-24	£187,451

Next steps

Over the next year, we will keep reaching out to every part of society, especially people in the most deprived areas, so that those in power hear their views and experiences.

We will also work together with partners and our local Integrated Care System to help develop an NHS culture where, at every level, staff strive to listen and learn from patients to make care better.

Our top three priorities for the next year are:

- **Pharmacy** – a review of the Pharmacy First scheme.
- **Living in a rural county** – focusing on the issues people face living in isolated areas and how they access services.
- **Care at home** – hearing the views of people who have an NHS@Home (virtual ward) package to provide care at home and how this is working for them.

New projects for 2023–24 include talking to military personnel and their families about how they access health and care. We'll also be continuing our work with Wiltshire EMTAS to engage with Bangladeshi and Nepali communities, and Travellers.

And we'll follow up on our recommendations from our previous reports to see what impact changes to services have had for local people.



Statutory statements

Healthwatch Wiltshire, The Independent Living Centre, St George's Road, Semington, Wiltshire BA14 6JQ.

Healthwatch Wiltshire uses the Healthwatch Trademark when undertaking our statutory activities as covered by the licence agreement.

The Healthwatch Wiltshire service was transferred to a new provider on 1 January 2024, following a procurement exercise by Wiltshire Council.

For the period 1 April 2023 to 31 December 2023, the Healthwatch Wiltshire contract was provided by **Help & Care**, A49, Aerodrome Studios, Airfield Way, Christchurch, Dorset, BH23 3TS. Registered Company No. 03187574. Registered Charity No. 1055056.

On 1 January 2024, the Healthwatch Wiltshire contract was awarded to **The Care Forum**, The Vassall Centre, Gill Avenue, Fishponds, Bristol BS16 2QQ. Registered Charity No. 1053817 and a Company Limited by Guarantee in England No. 3170666.

Most of the work featured in this report was carried out under Help and Care, apart from the priority survey and engaging with Afghan refugees, which were between January-March 2024.

The way we work

Involvement of volunteers and lay people in our governance and decision-making

Our Healthwatch Board consists of 4 members who work on a voluntary basis to provide direction, oversight and scrutiny of our activities. Our Board ensures that decisions about priority areas of work reflect the concerns and interests of our diverse local community.

Throughout 2023/24, the Board met 6 times and made decisions on matters such as partnerships with stakeholders and our contributions to their strategies.

Our wider group of volunteers were involved in a priority setting workshop to decide our projects for the forthcoming year. We ensure wider public involvement in deciding our work priorities.

We are committed to taking additional steps to ensure we obtain the views of people from diverse backgrounds who are often not heard from. This year we have done this by talking to Eastern European, Fijian and Afghan communities and Boaters.

Our work priorities are driven by what people have told us is important to them, through our surveys and feedback forms, information and signposting enquiries, web page views, and our mental health forum. Our survey to hear Wiltshire people's views on possible projects for next year gathered 211 responses.

Methods and systems used to obtain people's experiences

We use a wide range of approaches to ensure that as many people as possible can provide us with insight into their experience of using services. During 2023/24, we have been available by phone, and email, provided a web form on our website and through social media, as well as attending libraries and community campuses, community groups and forums. We've also heard people's experiences at health and wellbeing fairs, Armed Forces events, Freshers Fairs and at WI meetings.

We ensure that this annual report is made available to as many members of the public and partner organisations as possible. We will publish it on our website and share it with our mailing list subscribers and on our social media channels.

Responses to recommendations

All providers responded to our requests for information and recommendations. There were no issues or recommendations escalated by us to Healthwatch England Committee, so no resulting reviews or investigations.

Enter and View and PLACE visits

Healthwatch Wiltshire has a statutory right to carry out Enter and View visits in health and social care premises to observe the nature and quality of services, as set out in the Local Government and Public Involvement in Health Act 2007.

Enter and View visits could be to NHS organisations, GPs, dentists, opticians and community pharmacists. Visits are not inspections but aim to offer a layperson's perspective.

Patient-Led Assessments of the Care Environment (PLACE) assessments look at the care environment of services such as hospitals and day care centres.

We did not carry out any Enter and View or PLACE visits this year but are planning more for 2024/25.

Taking people's experiences to decision-makers

We ensure that people who can make decisions about services hear about the insight and experiences that have been shared with us. In our local authority area we take information to a number of committees and forums, including:

- Wiltshire Council's Health and Wellbeing Board and Health Select Committee
- BSW VCSE Alliance (Voluntary Community and Social Enterprise)
- Children and Families Voluntary Sector Forum
- Neighbourhood Collaboratives
- Health and Wellbeing Forums
- Patient experience groups (run by the hospital trusts)
- Wiltshire Integrated Care Alliance Partnership Meeting (NHS, council, VCSE, care homes)
- Wiltshire Youth Partnership

This year we've also shared feedback to inform the Integrated Care Board's work to improve prescription ordering services.

We also take insight and experiences to decision makers in Bath and North East Somerset, Swindon and Wiltshire Integrated Care System, in meetings that include the BSW System Quality Group (NHS providers and local authorities).

We also share our data with Healthwatch England to help address health and care issues at a national level.

Health and Wellbeing Board

Healthwatch Wiltshire is represented on the Wiltshire Council's Health and Wellbeing Board by Alan Mitchell, Chair of Healthwatch Wiltshire, where we have voting rights.

During 2023/24 our representative has effectively carried out this role by regularly attending meetings and workshops and reminding partner agencies about the importance of involving local people.


Integrated Care Board


Alan also represents Healthwatch Wiltshire on the Bath and North East Somerset, Swindon and Wiltshire (BSW) Integrated Care Partnership (ICP), and the Wiltshire Integrated Care Alliance (WICA) Partnership Committee.

Healthwatch Wiltshire
The Independent Living Centre
St George's Road
Semington
Wiltshire BA14 6JQ


 healthwatchwiltshire.co.uk

 01225 434218

 info@healthwatchwiltshire.co.uk

 HealthwatchWiltshire

 @HWWilts

 healthwatchwiltshire

ICB updates for Wiltshire Area Board – August 2024

New primary care centre in Hindon

The ICB has approved the funding to enable a new primary care premises to be built in Hindon.

There are still several hurdles to cross before final confirmation that the scheme will be able to proceed including, such as the securing of planning permission.

The fact remains that this is positive news for both the GP partners and the residents of Hindon and the surrounding areas.

This scheme represents the first of several priority estates projects which the ICB is looking to secure certainty on as part of its wider Primary Care Estates Plan.

Further details on this will be shared by Gordon Muvuti, Executive Lead for Primary Care, the coming months.

Ongoing work to tackle inequalities in Wiltshire

Core20PLUS5 is a national NHS England approach to inform action to reduce healthcare inequalities at both national and system level.

The approach defines a target population – the ‘Core20PLUS’ – and identifies five focus clinical areas requiring accelerated improvement.

All ICBs are encouraged to have a focus on the most deprived 20 per cent of the national population (Core2) as identified by the national Index of Multiple Deprivation (IMD).

ICBs can also choose additional population groups (PLUS) which experience poorer than average access, experience and/or outcomes.

PLUS populations have been identified for Bath and North East Somerset, Swindon and Wiltshire respectively, with the specific Wiltshire populations listed below:

- Routine and manual workers
- Gypsy, Roma and Traveler communities, including children
- Rural communities

In Wiltshire, there are several projects already under way which are helping to improve the health and wellbeing of people which make up the groups listed above.

These initiatives, such as tailored support for tobacco dependency, help with managing and reducing levels of obesity and dedicated clinics for proactive hypertension checks, are being led through a collaborative arrangement between colleagues at the ICB and counterparts at Wiltshire Council.

Pharmacy provision in Wiltshire

The Pharmaceutical Needs Assessment (PNA) for Wiltshire is due to be refreshed for September 2025.

The PNA maps current provision, assesses local need and identifies any gaps in provision.

It also is used as a key tool for identifying what is needed at a local level to support the commissioning intentions for pharmaceutical services and other services that could be delivered by community pharmacies and other providers.

Developing a PNA is a significant process, and the ICB has chosen to establish a steering group, made up of key partners, including Wiltshire Council, Healthwatch Wiltshire and Wessex Local Medical Committee, to help ensure its production fully represents the needs of the local communities, especially those that have called for more pharmaceutical services, such as Warminster.

A draft version of the PNA will be brought to the Wiltshire Health and Wellbeing Board ahead of its deadline of March 2025, with the finished article also due to go through the committee for sign off.

Bringing health and care services to Wiltshire's farming community

Through the accelerator vaccine programme and Health Inequalities Funding, the ICB has brought together more than 10 partners to pilot essential health and wellbeing services that are tailored specifically for those in the farming and rural community.

By engaging with farmers and listening to their experiences, the ICB has been able to gain a better understanding of the challenges they face when accessing health and care, such as not being able to attend GP appointments due to surgery car parks being unsuitable for tractors.

This unique insight spearheaded a unique initiative which has seen teams from multiple health and care organisations spend time at Salisbury livestock market to offer attendants a variety of on-the-spot services, such as health checks, including blood pressure and cholesterol monitoring, and mental health advice.

While teams at the market are not yet able to offer clinical interventions, it is hoped this kind of outreach work will continue to grow and develop in a way that ensures those from more isolated communities have the support they need to live healthy, happy lives.

Collaborative work to improve children's oral health in Wiltshire

The ICB and Wiltshire Public Health team have been working collaboratively on three priorities linked to oral health. These priorities can be seen below:

- Improve access of dental care services to the Wiltshire population, considering vulnerable populations who are at risk of poorer oral health outcomes and face barriers in access to dental care and treatment
- Increase the dental workforce within Wiltshire
- Improve oral health outcomes focused on Core20PLUS5 populations, including engagement, and further understanding population needs

In addition, there has been an allocation of £300,000 to fund oral health activities in Wiltshire for 2024/25.

This has been allocated from the dental care underspend, and the Public Health team and ICB are undertaking scoping work to plan how this funding can be used to deliver dental outreach services in Wiltshire for the most vulnerable populations.

Elsewhere, a number of oral health promotion programmes, which aims to prevent tooth decay and the subsequent need for dental treatment, have been under way across Wiltshire.

One such programme is First Dental Steps, which involves all health visitors receiving oral health champion training, and then using their new skills to provide families with expert advice and guidance.

The health visitors also give their families age appropriate oral hygiene packs, which contain toothpaste, a toothbrush and a sippy cup for children.

As part of the programme, children who meet a specific criteria, such as those whose siblings have undergone dental extraction, will have a direct referral to an NHS dentist.

Gypsies and Travellers Development Plan consultation begins 20 August, with engagement events to start next month

Your communities can now have their say on the Gypsies and Travellers Development Plan Document, as the consultation begins Tuesday 20 August until 5pm on Friday 4 October.

To enable people to find out more about the Development Plan Document and ask questions, we are holding five engagement events at different locations around the county in September where you can drop-in to find out more, and one online engagement event.

People can read the Gypsies and Travellers Development Plan Document and supporting consultation documents on our website and at the main council offices at County Hall, Trowbridge, Monkton Park, Chippenham, and Bourne Hill, Salisbury. The plan will also be available in many Wiltshire Council libraries.

Anyone can share their views through our online portal, and anyone without internet access can visit a library to use the computers, or contact us to get a written copy of the representation form and find out how to view the documents.

Information about what types of issues people can comment on will be available on our website.

The list of engagement events is as follows. People can just turn up at any time during the in-person events, which are drop-in sessions – there is no need to book. However, anyone who wishes to attend the online event must sign up beforehand. Anyone with an interest in the Plan can attend any of the in-person events – they do not need to choose the one nearest to them.

Event	Date	Time	Location
General information webinar	Tuesday 3 September	6pm-7.30pm	Online
Salisbury	Wednesday 4 September	4.30pm-7pm	Five Rivers Health and Wellbeing Centre, Hulse Road, Salisbury SP1 3NR
Devizes	Thursday 5 September	4.30pm-7pm	Devizes Library, Sheep Street, Devizes SN10 1DL
Chippenham	Monday 9 September	4.30pm-7pm	Olympiad Leisure Centre, Sadlers Mead, Chippenham SN15 3PA

Royal Wootton Bassett	Wednesday 11 September	4.30pm- 7pm	Royal Wootton Bassett library, 11 Borough Fields, Royal Wootton Bassett SN4 7AX
Trowbridge	Thursday 12 September	4.30pm- 7pm	Atrium, County Hall, Bythesea Road, Trowbridge BA14 8JN

Area Board Briefing Note
FACT Transitional Safeguarding Project

Service:	Families and Children’s Transformation (FACT)
Date prepared:	August 2024
Further enquiries to:	Simon Thomas
Direct contact:	Simon.thomas@wiltshire.gov.uk

PROJECT OVERVIEW

Transitional Safeguarding is an “*approach to safeguarding adolescents and young adults fluidly across developmental stages which builds on the best available evidence, learns from both children’s and adult safeguarding practice and which prepares young people for their adult lives*” (Chief Social Workers Knowledge Briefing June (2021)).

In response to multiple partners identifying opportunities for improvement in how we support young people who are vulnerable in the context of criminal and/or sexual exploitation as they move between services at age 18, the Families and Children’s Transformation (FACT) Partnership is undertaking a specific project to explore how strategic and operational systems and practice can be developed. The project is specifically exploring the concept of achieving better outcomes for this cohort of young people through a programme of culture, practice and system change rather than a structural change model. National evidence tells us that failure to effectively support young people in this transition to adulthood impacts significantly upon their future outcomes as well as increasing the cost of interventions later in life that are felt across a wide range of system partners including Adult Social Care, Housing, Police, Justice System, Health partners and the welfare benefits system.

The multi-agency project has been running for 20 months with an initial focus on seeking to understand the lived experience of the young people and how the whole system works in the context of young people’s support arrangements before, at and after the point they turn 18.

SUMMER 2024 UPDATE

As the project now moves towards closure in April 2025, the focus has shifted to identifying and implementing opportunities for improvement. This phase of activity is informed by case reviews, learning from cases that have been explored at the Creative Solutions Board during the period to date as well as the learning from cases considered within the Early Planning for Transitions activity. There has also been significant insight gained from engagement activity with young people, review of the Transitional Safeguarding mentoring programme and wider dialogue with a range of system partners about their experiences of working with young people in Wiltshire. We are also involved in a number of national networks exploring this issue and seeking to enhance approaches across the country.

The multi-agency activity has identified four key themes going forward.

Theme 1 - How the system can provide effective post-18 support for young people who have received intensive support prior to their 18th birthday

The project is working closely with Adult Social Care to enhance the existing post-18 support arrangements and to ensure that young people who require support from Adult Social Care experience a well-planned and smooth transition that leads to them being able to access appropriate support whilst also ensuring robust safeguarding oversight.

The project is also exploring the commissioning of housing provision with support specifically informed by the needs and vulnerabilities identified within the project.

Implementation of these developments will not just involve Adults Social but will require wider partner engagement and will need to be flexible and responsive to take account of the fluidity in young people's lives.

Intended impact

Success in this theme will mean that more young people are able to access effective post-18 support that enables them to achieve positive outcomes such as engagement in work and learning and reduced homelessness. The need for crisis-related support from across the system will also be reduced.

Theme 2 – How the system can best support young people with Special Education Needs/Disability (SEND) who are also vulnerable to exploitation

The project is facilitating conversation with colleagues from the Council's SEND Services, Social Care and pre/post-16 education providers to explore opportunities to ensure the support for these young people is as joined up and robust as possible taking account of the additional vulnerability and risks.

Intended impact

The key outcomes related to this theme are that fewer young people will drop out of post-16 work and learning and those that do will be picked up and supported to re-engage at an earlier stage.

Theme 3 – How the system partners can best work together to share information related to risk and vulnerability so that a shared assessment of risk is in place for each young person

This strand of work is in its exploratory phase with focussed conversations taking place with Police and Social Care colleagues, utilising case reviews to inform future recommendations and developments.

Intended impact

Improved sharing of information and consistency of assessment of risk will mean that partners will have a shared understanding of our most vulnerable young people and be able to respond more effectively when intervention is required. This will also enable consistency of support and response when young people move across and between services and parts of the system.

Theme 4 – How we can ensure that planning for transition from pre-18 to post-18 services is well-planned and effective

Informed by feedback from professionals and young people as well as case review activity, the project is working closely with Children's Social Care to embed best practice regarding planning for transition where contextual risks are present.

Intended impact

This theme is seeking to ensure that individual young people's needs, risks and vulnerabilities are well understood by relevant pre-18 and post-18 services so that transfer of support is as smooth as possible and that the risk of young people either disengaging from support or 'slipping through the net' are reduced.

Area Board Briefing Note Update on the FACT Family Help Project

Service:	<i>Families and Children's Transformation (FACT)</i>
Date prepared:	<i>August 2024</i>
Further enquiries to:	<i>Simon Thomas</i>
Direct contact:	<i>Simon.thomas@wiltshire.gov.uk</i>

Background

In early 2023, the Wiltshire Families and Children's Transformation (FACT) Partnership launched its Family Help project to enhance the local arrangements for the delivery of early intervention and prevention services for children, young people and families.

What do we mean by 'Family Help'?

Wiltshire's multi-agency Family Help arrangements enable children, young people and families to access the right help at the right time through a co-ordinated approach to prevention and early intervention through:

- a co-ordinated approach at a whole population/universal level to prevent needs from arising and to build resilience across all residents
- a robust multi-agency approach to identifying any additional needs at the earliest point and providing effective joined-up support that prevents the needs from escalating further

We use the term 'Family Help' to stress that the focus is on working with families and to avoid historical confusion associated with the term 'Early Help'.

Summer '24 Update

The project is now focussed on understanding the learning from the various strands of work and particularly the locality-based pilot activity in Warminster and Westbury with a view to embedding the successful features into the County-wide model for Family Help.

The Warminster and Westbury Pilot

What we set out to achieve and what we have achieved?

We wanted to develop and test some specific ways of working:

- Wrapping services/groups around local cluster(s) & communities.
- Creating a local case consultation system – Family Help Co-ordinator being local contact for support on case discussions.
- Applying a more flexible/responsive practice model – Localised team that built professional working relationships within the community.
- Creating a local community of practice – Warm hand overs and introductions for families rather than referrals
- Working with sibling groups across phases – bringing schools together to work across the whole family.
- Offering local training & sharing – Offering Peer supervision to the local pastoral care and parenting support staff in local schools, offering coaching and resources to support direct interventions
- Developing local 'voice' activity- Learning from the feedback of families

Over the last 15 months the pilot has been able to work with partners in the Westbury and Warminster area to provide a more individual response to Family Help. We have supported 53 families who under previous models would not have had received direct intervention within the home. We have been using

the Outcomes Star tool to understand impact and progress in families; analysis shows every family worked with has reported and shown positive progress.

In terms of other insights regarding impact of the project, early data analysis suggests specific positive impact in school attendance and school exclusion. There is also evidence that the provision of local advice to schools and other partners reduces unnecessary demand on the Council's 'front door' in terms of queries about support for individual children, young people and families. Work is ongoing to explore both quantitative and qualitative data and Oxford-Brookes University are currently undertaking the final stage of the pilot project evaluation to inform discussions about the future model for Family Help across Wiltshire.

Evaluation will also be completed on the Early Help Mental Health Pilot that has been integrated within the Warminster and Westbury activity; this project is due its national evaluation in September which will inform the future model of early help mental health support across the County.

What's next For Westbury and Warminster?

Family Help Pilot:

The specific activity of the Family Help Pilot Team ceased at the end of the Summer Term and has been transferred as 'business as usual' activity led by Spurgeons as the new delivery organisation for Family Hubs across Wiltshire (see below). All families that the pilot team are currently working have been introduced to staff from Spurgeons for any ongoing support needs.

Family Hubs:

The learning from the pilot has already fed into the delivery specification for the Family Hubs. These are the new Wiltshire wide service for families with children aged 0-19 (25 with SEND) delivered by Spurgeons since April 2024.

Family Hubs provide information, advice and support for all families with a mixture of evidence based interventions based on the local need. There are three flagship hubs in County Hall Trowbridge, Monkton Park Chippenham and Five Rivers Salisbury. Alongside this there are Community and Family Navigators based in community buildings such as libraries, leisure centres and community projects to offer support and guidance to families.

Further information can be found here [Family hubs - Wiltshire Together](#)

What's next for Wiltshire?

The county-wide aspects of the FACT Family Help project will continue as planned until April 25:

- Continued promotion of the All Together brand for Family Help

- Maintenance and development of the All Together web platform for families

- [All Together - Wiltshire Together](#)

- Ongoing roll-out of the whole system Family Help Workforce Development offer

- Further development and implementation of the Family Help outcomes framework

During this period the multi-agency partnership group will be reflecting on the learning and feedback from the pilot activity to inform a long-term county wide model.

Please contact fact@wiltshire.gov.uk if you'd like to find out more or get involved.

Area Board Briefing Note Overview of Wiltshire Youth Council

Service:	<i>Voice and Participation Team – Families and Children Services</i>
Date prepared:	<i>July 2024</i>
Further enquiries to:	<i>Gary Norton-Sanders, Service Manager - Quality Outcomes</i>
Direct contact:	<i>gary.norton-sanders@wiltshire.gov.uk</i>

Introduction

This briefing note provides an overview of the Youth Council's role and outlines what Councillors can expect from this body. The Youth Council is a crucial initiative aimed at fostering youth engagement in local governance and community development.

This year 13 Youth Council members were elected, and they meet together on a monthly basis; facilitated by the Voice & Participation Team, within Families and Children Services. The council is made up of young people aged 11 to 19 from across Wiltshire.

Role of the Youth Council

Our Youth Council serves as an advisory body, providing valuable insights and recommendations on issues affecting young people in our county. Their unique perspectives can help shape policies and programs that better address youth needs.

The Youth Council ensures that the voices of young people are heard in decision-making processes. It acts as a bridge between the youth community and Wiltshire Council, representing the interests and concerns of young residents.

Through participation in the Youth Council, members gain leadership and advocacy skills. This experience prepares them for future roles in civic and community life.

The Youth Council plans and executes 3 community projects, contributing to local development and addressing specific community needs. These projects can range from environmental initiatives to social programs.

The Youth Council engages with the broader youth population through forums, surveys, and social media. This helps ensure that the council's activities and recommendations are reflective of the wider youth community.

Members participate in national and regional initiatives, such as the British Youth Council and the United Kingdom Youth Parliament.

Expectations from the Youth Council

Councillors can expect termly updates from the Youth Council on their activities, projects, and key issues. This will be in the form of termly newsletter and presentations at council meetings where considered appropriate.

The Youth Council will provide informed recommendations on policies impacting young people. Councillors can expect well-researched and practical suggestions that address the specific needs of the youth demographic.

Youth Council Members will have the opportunity to attend a Council meeting to observe.

The Youth Council may seek to collaborate with councillors on initiatives and projects. This will include co-hosting events or supporting council-led programs aimed at youth development.

Councillors will often seek feedback from the Youth Council; this is most effectively achieved through engagement with the collective Youth Council and not through engagement with individual representatives. Similarly, the Youth Council will seek feedback from councillors on their initiatives and proposals. This two-way communication helps ensure that their activities align with broader county objectives and benefit from the experience of elected officials.

Councillors can expect the Youth Council to actively advocate for youth-related issues within the community. This includes raising awareness about challenges facing young people and promoting positive initiatives.

Conclusion

The Youth Council is a vital asset to our county, bringing fresh perspectives and innovative ideas to the table. As county councillors, your support and engagement with the Youth Council will be instrumental in maximizing its impact. By working together, we can ensure that the voices of our young residents are heard and that their contributions lead to meaningful improvements in our community.

Thank you for your attention and support.

Area Board Briefing Note

Service:	Cost of Living
Date prepared:	10 September 2024
Further enquiries to:	Will Oulton
Direct contact:	William.oulton@wiltshire.gov.uk

Cost of Living

As we prepare for winter, there remain some financial pressures on household budgets, and it is anticipated that there will be continuing demand for support and advice.

Overall inflation is relatively stable at 2.2%¹, which suggests that some cost pressures for the community have reduced. However, for example, under the new energy price cap, gas and electricity prices will rise by 10% in England, Scotland and Wales from October².

The Council, therefore, is continuing to work with partners to deliver interventions that provide advice and support to our communities, including:

- Wiltshire libraries are continuing as warm spaces and as sources of advice.
- We will contact community providers to update our [interactive guide](#) to help people find key support to combat fuel and food poverty. In addition, we are creating a page on the directory that gives an interactive advent calendar view of provision/opportunities over the Christmas period.
- Wiltshire bus users can continue to travel on most routes in the county for just £2 or less for a single fare until the end of December 2024³. The fare price reduction has been funded by the Government and is aimed at getting more people to use buses across the country during the current cost of living challenges.
- Ahead of the Government announcement to extend the Household Support Fund by 6 months from the 1st of October⁴, we are analysing the impact of schemes delivered under the programme so can further develop our approach to ensure that

¹ [CPI ANNUAL RATE 00: ALL ITEMS 2015=100 - Office for National Statistics \(ons.gov.uk\)](#)

² [What is the energy price cap and who gets winter fuel payments? - BBC News](#)

³ [Get around for £2 - extended to December 2024 - Connecting Wiltshire](#)

⁴ [Government support extended to help struggling households with bills and essential costs over winter - GOV.UK \(www.gov.uk\)](#)

those households most in need are targeted for support. A full report is expected at Cabinet in October.

- Pending confirmation of funding, Foodbanks and Community Food Providers will be invited to apply for funding to support their work.
- [Our website](#) and media channels offer a range of online support and sign-posting information on topics including council tax/benefits, energy advice and mental health support.
- A dedicated Wiltshire Wellbeing support line to provide advice and guidance, and officers are working with to improve processes to ensure people are directed to right support. Contact details on the phone are: 0300 003 4576, and email is: wellbeinghub@wiltshire.gov.uk
- With change to the eligibility of Winter Fuel Payments⁵, the DWP has been encouraging the take up of Pension Credit⁶. The Council has also been promoting the take-up of Pension Credit to those who may be missing out.

FUEL Programme

The Council is pleased to say that, following a successful summer programme that saw more than 1,500 young people make around 2,000 bookings at over 41 locations. , Wiltshire Council's Holiday Activity and Food programme (FUEL) will be back during the Christmas school holidays. It is funded by the Department for Education and provides children who are eligible for benefits-related free school meals with free access to activity, food and nutritional education during school holidays. Eligible families will be able to sign up later in the year and details will be promoted through all schools in Wiltshire in due course. More information about FUEL can be found at www.wiltshire.gov.uk/fuel-programme.

⁵ [Winter Fuel Payment: Eligibility - GOV.UK \(www.gov.uk\)](#)

⁶ ["You could get Pension Credit" – Week of Action to drive take up - GOV.UK \(www.gov.uk\)](#)

WILTSHIRE POLICE



Page 69

Road Safety update – Stonehenge Area Board

26 September 2024

Keeping Wiltshire Safe



Agenda Item 6

• #FATAL5 education



Not wearing a seat belt

It is a legal requirement in the United Kingdom to wear a seat belt if one is fitted, there are only a [few exemptions](#).

In 2017, 27% - over a quarter - of those who died in cars on the road were not wearing seat belts.

You can be fined up to £500 for not wearing a seat belt.

Wearing a seat belt not only helps protect your safety, it helps protect the safety of others.

Only one person is allowed in each seat fitted with a seat belt. Never use the same seat belt across two or more passengers.

As a passenger over the age of 14 it's your responsibility to ensure you're wearing a seat belt. Failure to do so could result in a fine.

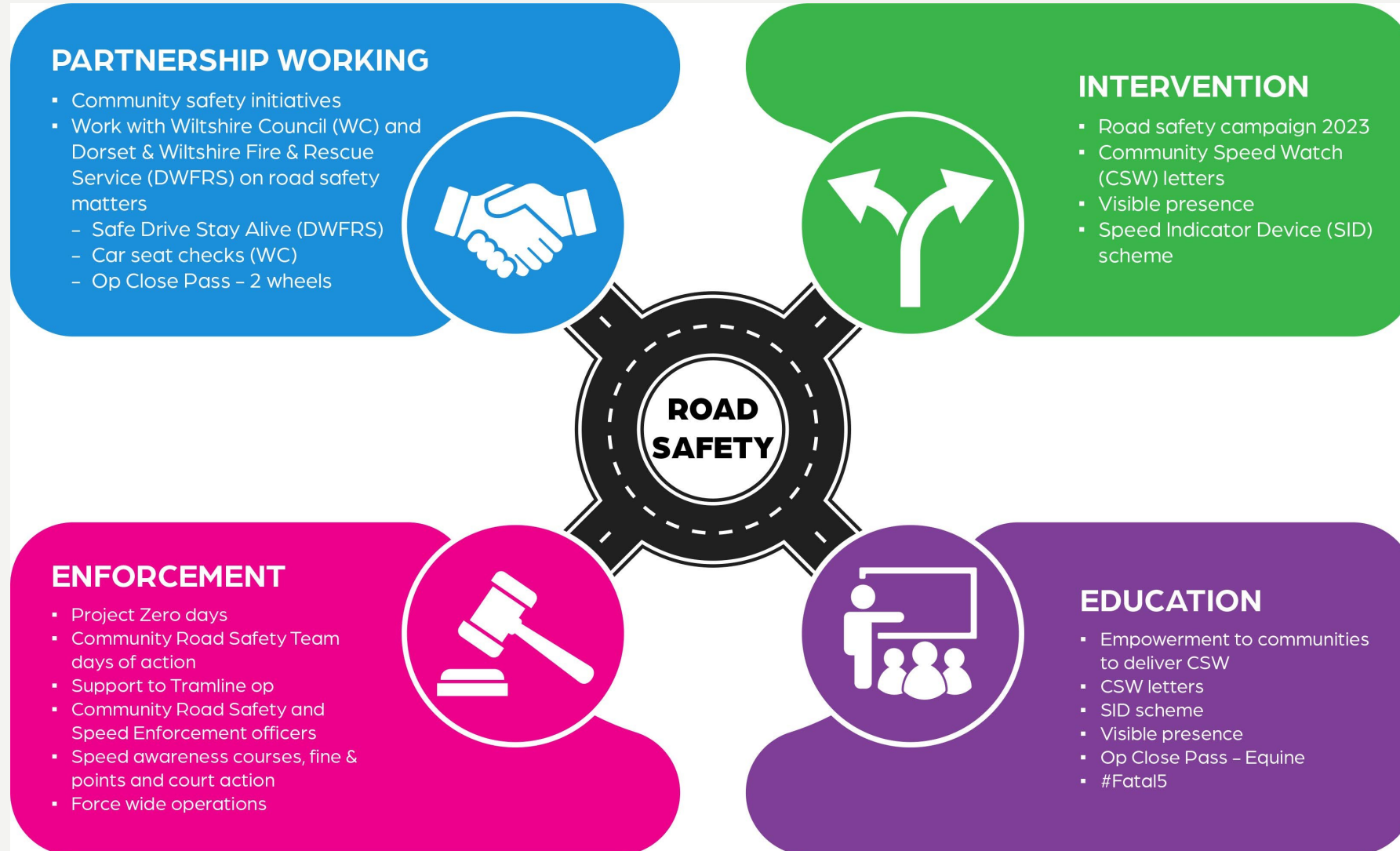
Child passengers

Children under 135 cm (4'4") tall must be in the correct car seat for their height and weight. You can be fined £500 if a child under 14 years old isn't in the correct car seat, or, if over 135cm tall, wearing a seatbelt whilst you are driving.

Find out car seat requirements and further information by visiting [child car seats: the law](#).



• Community Road Safety Team; what we do



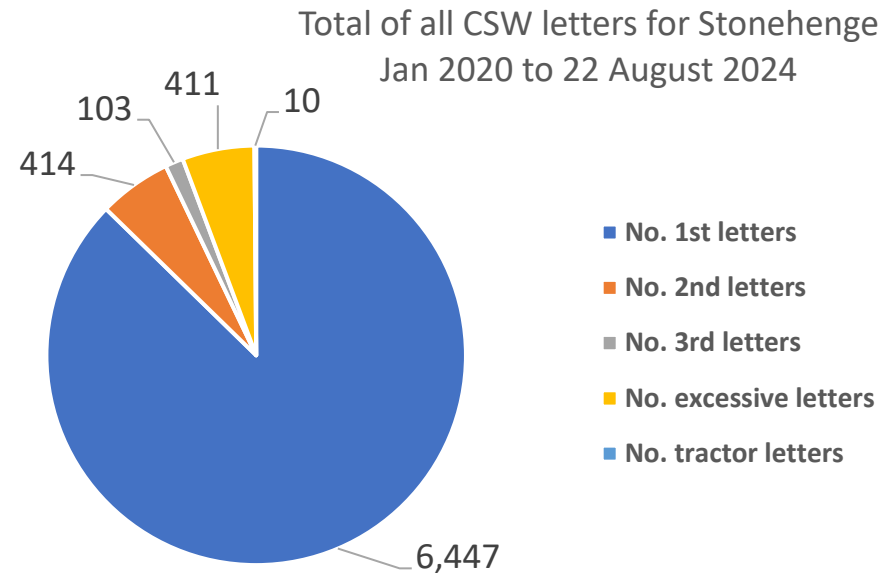
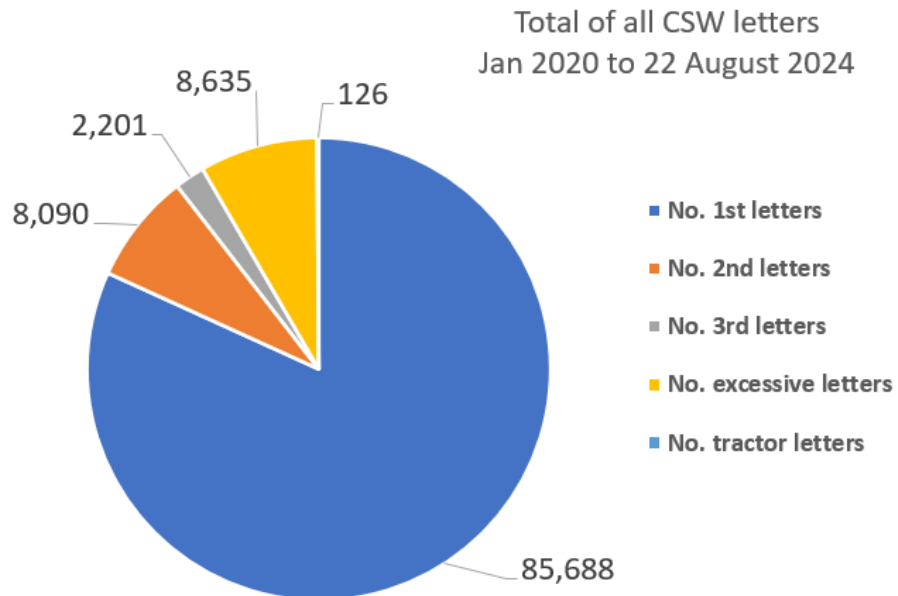
Community Speed Watch

CSW



• CSW – Stonehenge area - Data since July 2020 to 22 August 2024

Team	No. 1st letters	No. 2nd letters	No. 3rd letters	No. excessive letters	No. tractor letters	Total letters	No. of watches	Average speeders %
Berwick St James	267	32	8	22	1	330	208	3.6%
Durrington	1197	59	14	109	0	1379	90	6.6%
Enford	2216	192	55	111	0	2574	245	3.2%
Middle Woodford	196	19	3	8	0	226	155	0.89%
Shrewton	1794	77	17	116	4	2008	266	3.5%
Stoford and Newton	777	35	6	45	5	868	160	0.92%
Grand Total	6447	414	103	411	10	7385	1124	3.1%



• Traffic surveys – Stonehenge January 2022 to July 2024

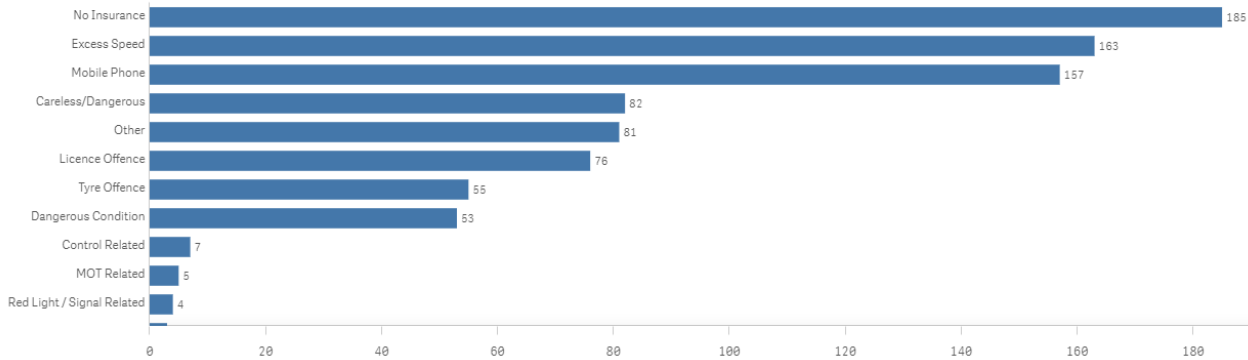
Wiltshire Council

Title	Result	Survey start date	Speed limit	85th percentile	CPT	Area Board
Amesbury - C32 Earls Court Road	No further action	15/05/2023	30	31.6	Amesbury	Stonehenge
Amesbury - Stockport Avenue	Police	01/02/2022	40	53.78	Amesbury	Stonehenge
Amesbury Main Road	No further action	04/02/2023	30	34.8	Amesbury	Stonehenge
Amesbury-Porton Road	No further action	15/04/2024	40	37.1	Amesbury	Stonehenge
Durrington - B3085 Hackthorne Road	Speed education	08/05/2024	20	29	Amesbury	Stonehenge
Durrington B3085 Church Street	Speed education	08/05/2024	20	24.7	Amesbury	Stonehenge
Durrington-B3085-Bulford Road	Speed education	08/05/2024	20	25.2	Amesbury	Stonehenge
Durrington-B3085-Church Street	Speed education	08/05/2024	20	24.7	Amesbury	Stonehenge
Durrington-High Street	Speed education	08/05/2024	20	27.1	Amesbury	Stonehenge
Durrington-Windsor Road	Speed education	08/05/2024	20	24.6	Amesbury	Stonehenge
Netheravon - N of Court Farm Rd	Speed education	08/11/2023	40	47.09	Amesbury	Stonehenge
Netheravon - A345 Salisbury Road north of Lower Road	No further action	08/11/2023	40	42.84	Salisbury	Stonehenge
Netheravon - A345 Salisbury Road north of Lower Road	No further action	08/11/2023	40	38.92	Salisbury	Stonehenge
Netheravon - A345 Salisbury Road south of Lower Road	No further action	08/11/2023	40	42.5	Salisbury	Stonehenge
Netton C292 High Post Road	No further action	12/06/2023	60	40.8	Amesbury	Stonehenge
Shrewton - A360 - Maddington Street	No further action	20/09/2023	30	34.3	Amesbury	Stonehenge
Shrewton - A360 - Maddington Street (The Common)	No further action	13/09/2023	30	31.2	Amesbury	Stonehenge
Shrewton - A360 Maddington Street - Sports club	No further action	20/09/2023	30	33.6	Amesbury	Stonehenge
Stoford - Stoford Bottom	No further action	30/06/2022	30	31.55	Salisbury	Stonehenge

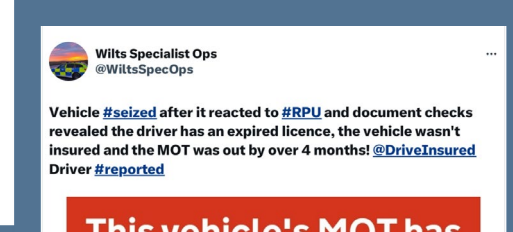
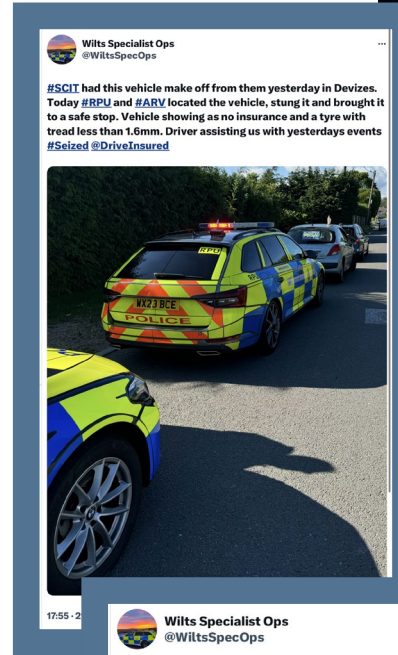
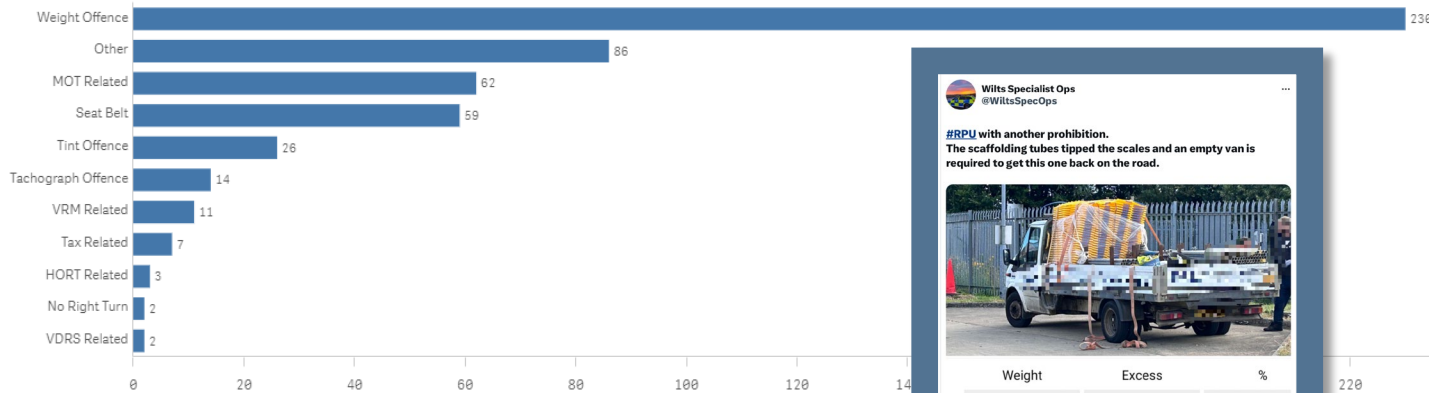
• Wider work recently

Our Roads Policing Unit (RPU) in the last quarter, covering **May to July** issued over **1551 tickets** to motorists, for numerous road related offences. The most common offences they are coming across are as follows:

Activity - Endorsable offences



Activity - Non-Endorsable Offences

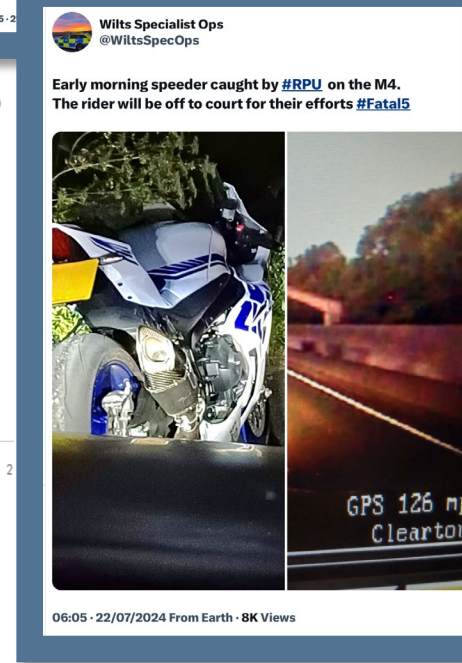
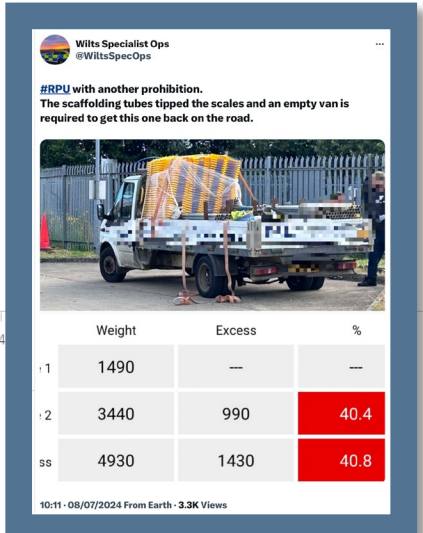


This vehicle's MOT has expired



MOT expired on 19 March 2024

02:57 · 31/07/2024 From Earth · 2.2K Views



Community Speed Enforcement Officers

CSEO's



• CSEO – Dashboard – 1 January 2023 to 22 August 2024

CSEO Activity Dashboard

Outcomes are dependent on previous convictions and history

13,530.00
No. Speed awareness co...

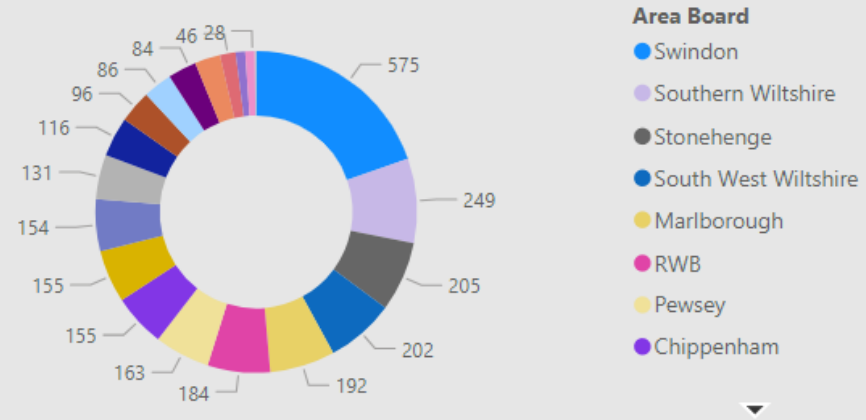
1,803.00
No. Fine & Points

184.00
No. Court

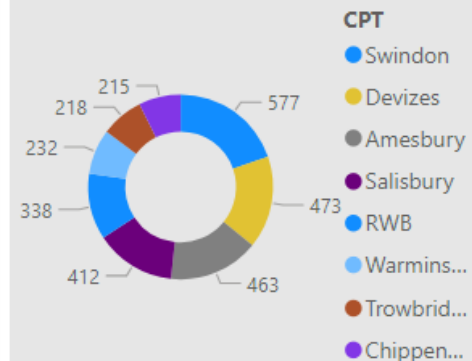
909
No. of Locations

Location	Year	Month	Speed awareness course	Fine & Points	Court	CPT	Area Board
Swindon - Thamesdown Drive	2023	December	251.00	54.00	0.00	Swindon	Swindon
Swindon Queens Drive adjacent with Cambridge Close	2024	April	151.00	26.00	0.00	Swindon	Swindon
Shaw and Whitley - A365 Folly Lane	2023	November	129.00	15.00	0.00	Trowbridge	Melksham
Swindon - Thamesdown Drive	2024	May	116.00	25.00	1.00	Swindon	Swindon
Swindon Marlborough Road	2024	May	113.00	6.00	1.00	Swindon	Swindon
Wilton - The Avenue	2024	May	112.00	30.00	9.00	Salisbury	South West W
Swindon - Thamesdown Drive	2024	January	103.00	16.00	0.00	Swindon	Swindon
Wilton - The Avenue	2023	August	102.00	31.00	4.00	Salisbury	South West W
Swindon Marlborough Road	2024	June	99.00	12.00	0.00	Swindon	Swindon
Harnham - Lime Kiln Way	2023	November	97.00	11.00	0.00	Salisbury	Salisbury
Cholderton - Church Lane	2023	March	95.00	4.00	1.00	Amesbury	South West W
Swindon - Thamesdown Drive	2024	March	94.00	23.00	0.00	Swindon	Swindon
Swindon Queens Drive (A4259)	2024	June	91.00	15.00	1.00	Swindon	Swindon
Swindon Queens Drive adjacent with	2024	March	90.00	13.00	1.00	Swindon	Swindon
Total			13,530.00	1,803.00	184.00		

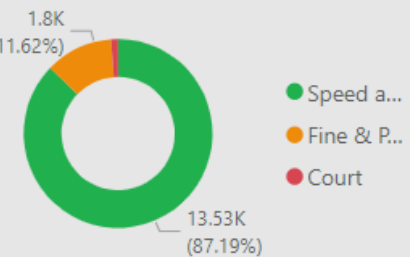
Activity by Area Board



Activity by CPT



Outcomes



• CSEO – Stonehenge Area Board - 1 January 2023 to 22 August 2024

CSEO Activity Dashboard

Outcomes are dependent on previous convictions and history

941.00
No. Speed awareness co...

73.00
No. Fine & Points

3.00
No. Court

35
No. of Locations

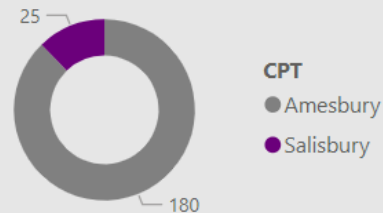
Location	Year	Month	Speed awareness course	Fine & Points	Court	CPT	Area Board
Tilshead - Candown Road	2023	August	78.00	10.00	1.00	Amesbury	Stonehenge
Tilshead - Candown Road	2023	November	46.00	1.00	0.00	Amesbury	Stonehenge
Tilshead - Candown Road	2023	July	43.00	8.00	0.00	Amesbury	Stonehenge
Tilshead - Candown Road	2023	January	39.00	2.00	0.00	Amesbury	Stonehenge
Tilshead - Candown Road	2023	June	38.00	2.00	0.00	Amesbury	Stonehenge
Tilshead - Candown Road	2023	September	35.00	3.00	1.00	Amesbury	Stonehenge
Tilshead - Candown Road	2023	February	32.00	1.00	0.00	Amesbury	Stonehenge
Amesbury - Boscombe Road	2024	July	29.00	2.00	0.00	Amesbury	Stonehenge
Amesbury - McKie Road	2023	August	26.00	0.00	0.00	Amesbury	Stonehenge
Tilshead - Candown Road	2023	October	25.00	2.00	0.00	Amesbury	Stonehenge
Tilshead - Candown Road	2023	March	24.00	3.00	0.00	Amesbury	Stonehenge
Tilshead - Candown Road	2023	May	23.00	2.00	0.00	Amesbury	Stonehenge
Amesbury - McKie Road	2024	July	22.00	1.00	0.00	Amesbury	Stonehenge
Tilshead - Candown Road	2023	December	22.00	2.00	0.00	Amesbury	Stonehenge

Total 941.00 73.00 3.00

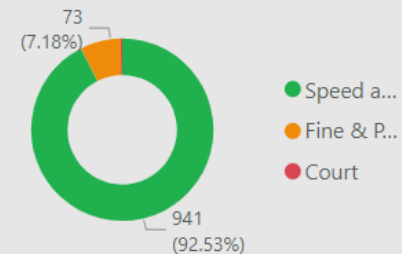
Activity by Area Board



Activity by CPT



Outcomes



• Your Force | Your Area | Follow us

For information on Road Safety in Wiltshire visit:
[Road safety campaign | Wiltshire Police](#)

[Road Safety \(wiltshire-pcc.gov.uk\)](http://wiltshire-pcc.gov.uk)



[Amesbury Town | Your Area | Wiltshire Police | Wiltshire Police](#)
[Amesbury Rural | Your Area | Wiltshire Police | Wiltshire Police](#)



[Amesbury Police | Facebook](#)

[Wilts Specialist Ops \(@WiltsSpecOps\) / X \(twitter.com\)](#)

[Wiltshire Specials \(@wiltspolicesc\) / Twitter](#)



STONEHENGE LOCAL HIGHWAYS AND FOOTWAYS IMPROVEMENT GROUP ACTION NOTES

	Item	Update	Actions and recommendations	Who
	Date of MS Teams meeting: 3rd July 2024			
	Please see link to complete the highway improvements form: https://www.wiltshire.gov.uk/article/6149/Local-Highway-and-Footway-Improvement-Groups and submit to LHFIGrequests@wiltshire.gov.uk			
	<p><u>Chairmans announcement:</u></p> <ul style="list-style-type: none"> • Expectation of LHFIG project progress and delays in implementation of projects. To understand the limited resources to complete projects over a single financial year and spend allocated budget, as many projects as possible have been ordered with the contractor for completion. • Netheravon speed reduction implementation trial update. Update on task group for speed limit reviews. • Waiting restrictions implementation update. All complete apart from Mills Way. • Link for reporting maintenance issues to National Highways: https://report.nationalhighways.co.uk/#:~:text=In%20an%20emergency%2C%20call%20999,Centre%20on%200300%20123%205000 			
1.	Attendees and apologies			
	Present:	Cllr Robert Yuill (Chair, WC), Cllr Graham Wright (WC), Cllr Ian Blair Pilling (WC), Cllr Dr Monica Devendran (WC), Cllr Kevin Daley (WC), Kate Davey (WC), Andy Shuttleworth (Winterbourne Stoke), Peter Paul (Durrington), Graham Jenkins (Bulford), Paul McKernan (Shrewton), Ted Mustard (Woodford), Debbie Corbett (Netheravon), Dorothea Georgeson (Fittleton cum Haxton), Martin Farrow, Tina Cole (Figheldean).		
	Apologies:	Steve Black (Stoford & South Newton), Sean Noble (Great Wishford), Rae Owen (Woodford & Durnford), Richard Harris (Shrewton), Richie Ayling (Netheravon), David Burke (Netheravon), Cllr Mark Verbinnen (WC).		

STONEHENGE LOCAL HIGHWAYS AND FOOTWAYS IMPROVEMENT GROUP ACTION NOTES

	Item	Update	Actions and recommendations	Who
2.	Notes of previous meeting			
		The notes of the last meeting held on 17 th April 2024 were accepted as a true record.	Agreed.	
3.	Financial Position			
		<p>2024-25 allocation: 35,462.00. The available budget at the start of the meeting is £35,087.00.</p> <p>The contribution level for Parish/Town Councils is set at 25%.</p> <p>Allocations made at this meeting:</p> <ul style="list-style-type: none"> 1-22-16 Figcheldean 20mph speed limit implementation £10,000 (LHFIG £7,500. FPC £2,500) <p>Remaining budget: £27,587.00</p>		

STONEHENGE LOCAL HIGHWAYS AND FOOTWAYS IMPROVEMENT GROUP ACTION NOTES

4.	New issues / Issues requiring a decision		
a)	<u>Amesbury Church St</u>	Request for bollards along the verge on Church Street to deter vehicles parking on the verge and causing damage. Cllr Devendran has requested this issue be added to the agenda pending support and approval by Amesbury Town Council.	<u>3/7/24</u> ATC confirmed they would monitor the situation for the moment and requested this issue be closed.
b)	<u>1-21-5</u> B3083 Berwick St James	Request for amendments to the warning signs installed in 2022 to include a relocation, supplementary plate and distance.	<u>3/7/24</u> Cllr Daley mentioned issues with the adjacent landowner, also confirmed support for this request. Design and estimate to be drafted. KD
c)	<u>1-24-13</u> Figcheldean, Brambles Nursery Avon Banks	Figcheldean Parish Council have been working with staff from Brambles Nursery (situated within Figcheldean) with regards to issues they are facing with both parents and staff accessing and parking in the vicinity of the Nursery. Previously the nursery used to operate a walking bus, which involved parents parking at the village hall and nursery staff walking down the path with the children. This practice has since stopped due to the nursery introducing a staggered drop off time and also due to a reduction in staff. We have received complaints from Parishioners regarding both driving etiquette and parking. Unfortunately, the current parking arrangements have caused quite a lot of damage to the adjacent roads and is not a sustainable solution. We would like signage on the road in both direction warning drivers to slow down and take care and children crossing signage. No waiting signage and In addition to this we would like to explore the feasibility of creating some lay-by parking on the edge of Ablington Wood and Ablington High Street. As a first step we would like you to invite you to attend a site visit so we can show you	<u>3/7/24</u> PC explained issues in more detail. Group agreed for site meeting to be undertaken with KD, FPC, RY & IBP. KD

STONEHENGE LOCAL HIGHWAYS AND FOOTWAYS IMPROVEMENT GROUP ACTION NOTES

		the current issues we are experiencing and take a look at the area we have in mind as a possible place to create a lay-by parking bay.		
d)	<u>1-24-14</u> Figheldean village resurfacing requests	This was mentioned at the Highways meeting at Figheldean Village Hall on 27 Mar 24 with the response that this would be considered. The following road surfaces many areas of significant de-lamination of the road surface, and are in need of repair: Church Lane, from the church to the junction of the Milston Road, The High Street from the junction with Avon Banks and Church Lane Pollen Close	<u>3/7/24</u> Link to Wiltshire Highways Maintenance Programme Highways maintenance - Wiltshire Council	KD
e)	<u>1-24-15</u> Fittleton cum Haxton	There are no footpaths for pedestrians walking through Haxton to/from Salisbury Plain. Traffic ignores the 30mph speed limit and pedestrians have nowhere to retreat from fast moving vehicles. We would like to have a white line that denotes a pedestrian walkway and the erection of a speed indicator device. There is currently no pole on which to place the SID, so we would need one erected. The road is extremely difficult to navigate on foot. The demographic of the area is significantly elderly and people of all ages use the route to push prams and walk dogs.	<u>3/7/24</u> PC explained issues in more detail. Group agreed for site meeting to be undertaken with KD, FHPC, RY & IBP.	KD
f)	<u>1-24-16</u> Amesbury Holders Road	Concerns raised by local community regarding employees of the school parking all day in the layby near No. 10 holders Road. Request for signing to state visitors and workmen only.	<u>3/7/24</u> WR Assessments completed. Proposal plans with TC/PCs for review.	
g)	<u>1-24-17</u> Shrewton A360/B390 junction	Traffic flows on the Chitterne Road (B390) have increased significantly due to MOD staff commuting between Warminster and Larkhill/Durrington/Bulford, this was not anticipated in the Army Rebasing Plan (“or contribute towards any existing ‘rat running’ issues through local villages”). Traffic avoiding congestion on the eastbound A303 also uses this route. The open, downhill nature of the north south A360 approach to the B390 junction and the village 30mph restriction encourages excessive speed and late braking. This poses a risk to all road users at the junction and on into the village. A major roundabout at this junction would reduce traffic speed and	<u>3/7/24</u> KD explained a request of this nature is outside the capability or resource of LHFIFG. Forward request to Transport Planning for comments.	KD

STONEHENGE LOCAL HIGHWAYS AND FOOTWAYS IMPROVEMENT GROUP ACTION NOTES

		congestion at this busy junction, smooth the flow and also reduce the speed of traffic entering the village. A roundabout at this junction would also allow the realignment of these roads to naturally reduce speed and increase visibility.		
h)	1-24-06 Amesbury London Road	The bus shelter on London Road near to Kitchener Street has been damaged and subsequently removed by Wiltshire Council. This was originally funded by Amesbury Town Council through a CATG grant in 2021 after the original one was also damaged. Request for replacement bus shelter. 17/4/24 Group discussion resolved not to fund a replacement shelter. MD to liaise with Amesbury Town Council on whether they wish to fully fund a new shelter or would like to consider a bus stop flag signpost instead.	3/7/24 Group agreed for site meeting to be undertaken with KD, ATC, RY & MD.	KD
i)	1-22-10 Amesbury village gates and planters	The first site at A345 Salisbury Road is now completed and scheduled for installation during July. Amesbury Town Council would now like to request the next priority site entrance to the town to be considered for implementation and funding.	3/7/24 ATC confirmed location for next site, GW raised concerns over positioning and the existing Amesbury sign. Group agreed for site meeting to be undertaken with KD, ATC, RY & MD to agree best location.	KD
5.	Other Issues			
a)	1-24-07 A345 Figheldean	The road surface by the bus stop is uneven which causes water to pool in bad weather. This results in anyone waiting at the bus top getting soaked by water when the bus pulls in. Request for surfacing improvements or a gully. 17/4/24 KD to liaise with maintenance colleagues and request an inspection of this site in the first instance.	3/7/24 KD has contacted the maintenance team to carry out an inspection. Awaiting response.	
b)	1-24-10 Shrewton, London Road	London Road Shrewton suffers from excessive traffic volumes and speeds. There is a redundant bus stop outside no. 4 London Road that has been used to mount a speed indicator device (SID) that has proved its worth. However, this device is battery powered and when deployed requires regular	3/7/24 Landowner permission received.	

STONEHENGE LOCAL HIGHWAYS AND FOOTWAYS IMPROVEMENT GROUP ACTION NOTES

		<p>maintenance. The Parish Council would like to mount a solar powered SID at this location, however the pole is not long enough to do this; the Parish Council would like the redundant bus stop pole replaced with a suitable SID mounting pole.</p> <p>17/4/24 KD to assess site and draft proposal and cost for SPC to review. Group agreed funding up to £500 (with 25% contribution from SPC).</p>	Order and implement.	KD
c)	<p>1-24-02 South Newton A360/C283 Stoford Bottom crossroads</p>	<p>Over the recent festive period there were a number of road traffic accidents along the A360 within the vicinity of the C283 (Stoford Bottom/Church Bottom) crossroads. The A360 has a number of solid white line "no overtaking" restrictions along its way but none at the approach to the crossroads. It is believed that drivers, frustrated by the restrictions, use this opportunity to overtake, just as they approach the crossroads. The visibility at the junction from the minor road is hindered by the roadside vegetation and can cause motorists to misjudge the safe distances of approaching traffic. Increasing the (no overtaking) double white lines past the crossroads and increasing the line of sight visibility (drastically trimming back the hedge/vegetation) from the roadside would make the junction a lot safer.</p> <p>7/2/24 Group agreed to support this issue and allocate up to £1000 (25% contribution from SNPC of £250). KD to arrange site meeting with SB to carry out review of junction and make any necessary recommendations.</p> <p>17/4/24 Site meeting undertaken in March 2024. Location does not meet criteria for STOP sign. GW committed to escalate the issue with Highways management. Surfacing works to be investigated at this junction while the A360 closure is in operation.</p>	<p>3/7/24 Surfacing works to take place at the crossroads including refresh of give way road markings on minor arms. KD to monitor and chase time frame.</p>	
d)	<p>1-24-05 Amesbury Solstice Park</p>	<p>Lorries are using these roads for overnight stays and as a result drivers are leaving human faeces on verges. They are also damaging the footway verges and are causing a hazard to drivers who are exiting the in-roads from businesses on the Park. This has gotten worse with the closure of laybys along the A303. These roads offer a safe haven, away from the public eye and provide local food offerings within easy reach. Limited lorry parking at Solstice Park means they are parking on public roads, where no restrictions</p>	<p>3/7/24 WR Assessments completed. Proposal plans with TC/PCs for review.</p>	

STONEHENGE LOCAL HIGHWAYS AND FOOTWAYS IMPROVEMENT GROUP ACTION NOTES

		are currently in place. The issue has been raised to National Highways. Request for waiting restrictions for the whole Solstice Park estate to the highway boundary. 17/4/24 KD to collate all WR requests, assess sites and draft proposals for PC/TCs to review.		
e)	1-24-08 Figheldean, High Street/Pollen Lane	A request to put double yellow lines along the road next to the old school on the high street from the corner of high street and Avon banks to the post box opposite the working man's club, Also another section of double yellow lines on both sides of the junction of Pollen Lane and High street. 17/4/24 KD to collate all WR requests, assess sites and draft proposals for PC/TCs to review.	3/7/24 WR Assessments completed. Proposal plans with TC/PCs for review.	
f)	1-24-04 Durrington, George Close	The entrance has a cut away that was designed to keep vehicular access available especially for emergency vehicles/bin collections etc. It is being used as a car parking area. Can hatched keep clear be installed please. 7/2/24 Group agreed to support this issue and add this location to the waiting restrictions review list for 2024/25. 17/4/24 KD to collate all WR requests, assess sites and draft proposals for PC/TCs to review.	3/7/24 WR Assessments completed. Proposal plans with TC/PCs for review.	
g)	1-23-19 Bulford, Junction 16 roundabout	The approaches to the Double Mini Roundabout (Junction 16) from Telegraph Hill and the A3028 from Durrington are badly visually obscured giving little notice to the approaching motorists to slow down and give way. There have been a number of accidents and a multitude of near misses on the junction. The approaches from Double Hedges and Salisbury Road from the garage have reasonable visibility. Council requests that a full risk assessment study is carried out and appropriate traffic calming and/or improved warning signage introduced where necessary on the subject approaches. <i>Note: The CEO Wiltshire Unitary Council has agreed that if changes are considered necessary alternative funding sources could be provided outside of the LHFIFG delegated budget. A letter can be supplied in support of that position.</i>	3/7/24 Safety review issued to BPC for review. Arrange meeting with GJ, MV, RY to discuss safety review and Bulford cycle signing.	KD

STONEHENGE LOCAL HIGHWAYS AND FOOTWAYS IMPROVEMENT GROUP ACTION NOTES

		<p>15/11/23 Group agreed. Request quote from consultant. Further discussion required on funding for audit.</p> <p>7/2/24 Group agreed to support this issue and allocate £2500 (25% contribution from BPC of £625). KD to finalise details with BPC and order the safety audit.</p> <p>17/4/24 Safety review with consultant for completion. KD will issue report once received.</p>		
h)	<p>1-21-17 A345 Netheravon</p>	<p>Confirmation given that a trial will take place in Netheravon, initial meetings have taken place with an intended implementation in Summer/Autumn. This will also be discussed within the task group. Update given within the chair's updates.</p> <p>Confirmation provided by the Traffic Order team was given on 08/08/2023 that no complaints were raised against the order.</p> <p>16/08/23 RS to proceed with submission of works pack and implementation.</p> <p>15/11/23 Implementation of trial 40mph speed limit complete. Trial will be monitored over a 12-month period. Check if previously agreed by management for monitoring data to be shared throughout trial.</p> <p>7/2/24 Monitoring data has been shared.</p> <p>Group agreed to support additional SID post and have allocated £500 (25% contribution from NPC of £125). KD to liaise with RS to arrange installation.</p> <p>17/4/24 RS has ordered additional SID infrastructure.</p>	<p>3/7/24 Works order for additional SID infrastructure is with contractor. Installation is imminent.</p> <p>PC commented they have noticed a difference in speed and expressed thanks.</p>	
i)	<p>1-23-15 Pedestrian Crossing, The Packway Larkhill Durrington</p>	<p>16/08/23 Following on from a meeting with the MOD, there are crossing points required on The Packway, Larkhill. Group agreed to proceed with pedestrian crossing assessment (Durrington support 25%) for further consideration/potential substantive bid. Further investigations are required.</p> <p>15/11/23 Assessment in progress, report to be drafted by end of November.</p> <p>7/2/24 Assessment report to be issued imminently.</p> <p>17/4/24 Report issued. Cllr Blair-Pilling raised concerns regarding wider area</p>	<p>3/7/24 IBP commented awaiting outcome of Stonehenge tunnel decision which will have an impact at this location. Appeal date 15/7/24.</p>	To note

STONEHENGE LOCAL HIGHWAYS AND FOOTWAYS IMPROVEMENT GROUP ACTION NOTES

		if Stonehenge tunnel goes ahead.		
j)	<u>1-23-17</u> Byway 20 improvements Amesbury	<u>16/08/23</u> Group agree further investigation is required to determine land ownership and who should carry cost of improvements. RS to speak with development control. Consideration/potential substantive bid. Further investigations are required before group can support. <u>15/11/23</u> Highway Technician has confirmed he will aim to secure commitment from Bloor Homes to make the improvements required for Byway 20, but no timescale has been given.	<u>3/7/24</u> Chair provided update on issues regarding adoption. Group agreed to remove and close from LHFIG.	KD
k)	<u>1-23-18</u> Railing at Christ the King Catholic School Parsonage Road entrance, Amesbury	<u>16/08/23</u> Group agreed to progress pedestrian guard rail outside school entrance. <u>15/11/23</u> This issue is solely school related; therefore, KD has spoken with school travel plan advisor. As a result, the Road Safety team will contact the school directly to discuss road safety education training on safe access/egress.	<u>3/7/24</u> No further action for LHFIG. Recommend closing issue and remove from agenda.	
l)	<u>1-22-16</u> Figcheldean speed limits	Requests to reduce the speed limit on the A345 from 50 MPH to 40 MPH through the village of Figcheldean, to reduce the speed limit being 50 MPH to 30 MPH on the High Street entering the village of Figcheldean and to reduce the general speed limit of 30 MPH to 20 MPH through the rest of the village of Figcheldean and Ablington. LHFIG agreed to wait for outcome of A345 Netheravon speed limit assessment before agreeing a way forward for this request. No further action taken at this time. Awaiting 25% confirmation for 20mph SLA, further discussion required surrounding if any improvements for safety can be made on the A345 at the bus stop whilst awaiting the outcome of the Netheravon trial. Confirmation given by Parish. Move forward with process – new SLA cost is £2900 meaning contributions of £725. RS to attend meeting with Figcheldean PC to discuss issues on the A345.	<u>3/7/24</u> Group agreed funding to implement 20mph speed limit as per assessment recommendation. Estimate £10,000. Figcheldean PC confirmed 25% contribution. Progress speed to Traffic Regulation Order (TRO) stage.	KD

STONEHENGE LOCAL HIGHWAYS AND FOOTWAYS IMPROVEMENT GROUP ACTION NOTES

		<p>RS met with Figcheldean PC to discuss options and has submitted designs for sign/line improvements which are ongoing, alongside ordering SLA for the Village which will hopefully be completed during September 2023.</p> <p>7/2/24 20mph speed limit assessment in progress.</p> <p>A345 signing proposal works pack with contractor, anticipate completion by end of financial year.</p> <p>17/4/24 Report issued. A345 signing project to be completed imminently.</p>		
m)	<p>1-22-2 Orcheston 20mph speed limit</p>	<p>16/08/23 Orcheston PC are yet to confirm contribution and agreement to implementation phase of 20mph speed limit. RS and GW to meet with PC to discuss options.</p> <p>15/11/23 Orcheston PC confirmed they wish to progress the 20mph speed limit. PC meeting next week to discuss as funding of contribution might be problematic. Group discussion on parish precepts and how this funding can be used for improvement projects within the parish. Confirmation of agreement to implement and contribution.</p> <p>7/2/24 Orcheston PC have confirmed contribution for the implementation of the 20mph speed limit at £1,750. KD to progress with TRO legal process.</p> <p>17/4/24 Legal documents with TRO team for processing. Advert dates for consultation period to follow.</p>	<p>3/7/24 Legal TRO consultation period ended. No objections received. Progress to implementation.</p>	
n)	<p>1-23-10 Bollard request Lower Backway Shrewton</p>	<p>16/08/23 Group agreed to progress bollard.</p> <p>15/11/23 Further information required from Shrewton PC regarding land ownership and future status of right of way. Bridleway application in progress. SPC will continue to monitor and report back.</p> <p>7/2/24 Group agreed to support this issue and allocate up to £500 (25% contribution from SPC of £125). KD to arrange site visit with SPC to review best location for a bollard and determine land ownership extents. Move back to issues requiring decision section above.</p> <p>17/4/24 Site meeting now scheduled for 22/04/24.</p>	<p>3/7/24 KD has contacted Rights of Way and still awaiting response. Chase update and progress design.</p>	
o)	<p>1-21-5 B3083 between A303 and Berwick St James</p>	<p>Task group placed on hold until progression of the Netheravon Trial. AS asked RS to provide full SLA report.</p> <p>15/11/23 KD to send PC SLA report information.</p>		To note

STONEHENGE LOCAL HIGHWAYS AND FOOTWAYS IMPROVEMENT GROUP ACTION NOTES

		7/2/24 Further correspondence received from PC. Environment Select Committee (member led) have set up a task group working with Wiltshire Council Highways officers to look at a new policy for speed limit assessments going forward.		
p)	1-21-10, 1-21-11, 1-21-12 C42 Woodford Valley – speeding and lack of footways	Environment Select Committee (member led) have set up a task group working with Wiltshire Council Highways officers to look at a new policy for speed limit assessments going forward.		To note
q)	1-22-9 Amesbury speed limit requests	Environment Select Committee (member led) have set up a task group working with Wiltshire Council Highways officers to look at a new policy for speed limit assessments going forward.		To note
r)	1-22-21 Upper Woodford bridge damage repairs	Damaged pillar on the north side of the river bridge at Upper Woodford, bridge end adjacent to the C42. The stone capping has been knocked off into the hedge, and the two retaining stones are now unaligned. Presumably the damage was caused by a large vehicle having to negotiate the turn onto the C42 from the bridge with the many vehicles parked on the road adjacent to the public house. 16/08/23 No further action for LHFIG, with bridge team.	3/7/24 No further action for LHFIG. Recommend closing issue and remove from agenda.	
s)	1-23-1 Amesbury road markings & waiting restrictions	Often there are parked cars either side of the road (South Mill). The bigger issue is then, for instance, fire engines/larger vehicle access. There are also no road markings once you leave Salisbury Road into South Mill. Waiting restrictions to be added to the next years submission of waiting restrictions if agreed by group, existing white lining can be raised via maintenance or LHFIG but will be the new financial year. Group supported to be submitted on waiting restrictions order for 2023/2024 order. Amesbury TC to confirm if they wish to fully fund themselves or wait for the next batch. Amesbury confirmed inclusion within next WR batch. 16/08/23 Keep on agenda to build a new batch of WR requests.	3/7/24 WR Assessments completed. Proposal plans with TC/PCs for review.	

STONEHENGE LOCAL HIGHWAYS AND FOOTWAYS IMPROVEMENT GROUP ACTION NOTES

t)	1-23-3 Stonehenge Road Amesbury speed limit	Environment Select Committee (member led) have set up a task group working with Wiltshire Council Highways officers to look at a new policy for speed limit assessments going forward.		To note
u)	1-23-5 Trinity grain LTD Shrewton signs	<p>The Trinity Grain would like a Highway – No Turning Right for HGV's to be erected on the current sign directing traffic to Salisbury on A360. Trinity has erected the sign on our land, not a highway and it is not in the best position to be visible to all HGV's. From Trinity Grains HSE inspection. Our HSE inspector advised me to ask Wiltshire Council if was possible to move the sign from its current position on the right hand of our gate as you leave to site to be on the sign opposite our gate.</p> <p>As there is weight limit going through Shrewton High Street the better visibility of the sign will reaffirm the rule that no HGV's go through Shrewton. Most of the HGV vehicle drivers are regulars and know not to go through Shrewton village. Group support, move to design phase (Trinity Grain to confirm cover of cost)</p> <p>7/2/24 Trinity Grain have now agreed to fund this scheme. Progress design to implementation.</p> <p>17/4/24 RS to finalise design and order with contractor.</p>	3/7/24 Design agreed. RS to order with contractor.	RS
v)	1-23-6 Middle Woodford school keep clear markings	<p>Request for school keep clear marking to be moved from current position and repositioned to location of current vehicular entrance to the school.</p> <p>16/08/23 Group agreed to add to waiting restrictions list for new financial year.</p>	3/7/24 WR Assessments completed. Proposal plans with TC/PCs for review.	

STONEHENGE LOCAL HIGHWAYS AND FOOTWAYS IMPROVEMENT GROUP ACTION NOTES

6.	Orders issued, awaiting construction			
a)	<p><u>1-23-21</u> Great Wishford, West Street</p>	<p>Missing street sign for West Street. This is the first sign when you enter the village, opposite the church. Great Wishford has no house numbers, just street signs and names. Deliveries are a problem when there is no sign to tell the driver which street they are in. This has been reported via My Wiltshire several times. Request for a replacement street name plate. <u>15/11/23</u> Discussion on use of LHFIG funds to accommodate like for like replacement street name plates which should be funded by maintenance budget. PC to send photos of name plates in village to indicate style and material used. Draft design and estimate for PC to review, then discuss options for funding. <u>7/2/24</u> GWPC have confirmed agreement with design. KD to source a quote for supply and installation from contractor and report back to discuss funding. <u>17/4/24</u> KD has chased contractor for a quote March 2024, awaiting response.</p>	<p><u>3/7/24</u> Works order with contractor for implementation.</p>	
b)	<p><u>1-24-03</u> Amesbury, Imber Avenue</p>	<p>Several reports have been received by the Divisional Councillor of vehicles driving the “wrong way” along Imber Avenue, which is one-way from Allington Road, a survey of residents has confirmed this. Rhiann Surgenor carried out a site visit with the Councillor and has suggested signage could be reviewed to make the status of Imber more obvious. <u>7/2/24</u> Group agreed to support this issue and allocate up to £500 (25% contribution from ATC of £125). KD to arrange site meeting with RY to carry out review of one-way signs/lines. <u>17/4/24</u> ATC confirmed contribution towards increased cost of £650. Cllr Yuill in support. Group agreed funding for increased cost.</p>	<p><u>3/7/24</u> Works order with contractor for implementation.</p>	
c)	<p><u>1-23-23</u> Bulford, Old Coach Road</p>	<p>Where the public footpath meets Old Coach Road there is no signage for motor vehicle users to make them aware of the emergence of pedestrians and cyclists. There have been a number of dangerous occurrences. With the proliferation of electric vehicles the junction has become more</p>	<p><u>3/7/24</u> Works order with contractor for implementation.</p>	

STONEHENGE LOCAL HIGHWAYS AND FOOTWAYS IMPROVEMENT GROUP ACTION NOTES

		<p>dangerous. Bulford Parish Council requests that a survey of signage be carried out and where necessary appropriate signage added.</p> <p>7/2/24 Group agreed to support this issue and allocate up to £500 (25% contribution from BPC of £125). KD to carry out site visit and recommend viable solution.</p> <p>17/4/24 BPC confirmed contribution towards increased cost of £600. Group agreed funding for increased cost. Agree sign locations and order works with contractor.</p>		
d)	<p><u>Enford – C32</u> <u>Coombe & East</u> <u>Chisenbury</u> Confirmation from parish</p>	<p>Confirmation of contribution confirmed – this will be processed for implementation in new financial year. Traffic regulation order submitted to the team for processing.</p> <p>15/11/23 TRO legal documents drafted. Formal consultation period is 26th October – 20th November.</p> <p>7/2/24 Formal consultation period finished with no comments objecting to the proposals. KD to order works with contractor.</p> <p>17/4/24 Works order with contractors for implementation.</p>	<p>3/7/24 Works complete. Contribution invoice to be issued.</p>	
e)	<p><u>Durnford Speed limits</u> 30mph speed limit implementation</p>	<p>16/08/23 Traffic regulation order submitted to TRO team for reduction from national speed limit to 30mph speed limit, formal consultation now completed.</p> <p>15/11/23 Comments received to formal consultation. Submit Cabinet Member report.</p> <p>7/2/24 Cabinet Member has approved implementation. KD to order works with contractor.</p>	<p>3/7/24 Works complete. Contribution invoice to be issued.</p> <p>Durnford PC wish to express thanks for speed limit and work involved with implementation.</p>	
f)	<p><u>1-23-24</u> Netheravon, A345 Harefield Crescent</p>	<p>The bus stop is very dangerous for bus users. It is not visible by drivers as it is not lit and it is set back from the road. Also, the bus stop sign is not at the bus stop. When children get off the bus from school (Durrington and Amesbury) the visibility left is very poor as there is a bend in the road with tall foliage obstructing the view. Vehicles come out of the new 40mph speed limit and accelerate away along this stretch of road with no consideration for anyone trying to cross the road. The bus stop needs to be</p>	<p>3/7/24 Works anticipated to be completed by end of July.</p>	

STONEHENGE LOCAL HIGHWAYS AND FOOTWAYS IMPROVEMENT GROUP ACTION NOTES

		lit, a proper bus stop sign installed, foliage at the bend to the north cut back, and illuminated signs saying 'Slow Down Children Crossing'. 7/2/24 Group agreed to support this issue and allocate up to £500 (25% contribution from NPC of £125). KD to arrange of bus stop flag sign to be relocated and check highway boundary for adjacent tree removal and potential to increase width of bus stop hardstanding. 17/4/24 Works order with contractors for implementation. Highway boundary plan sent to NPC & Cllr Blair Pilling for information.		
g)	1-24-01 South Newton SID deployment	Speeding traffic is an issue through the Parish. South Newton Parish Council is supportive of the local Community Speed watch Team purchase of a Speed indicator Device (SID). The SID is to be sited at temporary locations around the villages to highlight the speed of oncoming vehicles and record the number of speeding vehicles. This information will be used to determine the best times for the team to perform speed watch activities. Poles are required to support the SID; assistance is required as to the most practical and suitable location. 7/2/24 Group agreed to support this issue and allocate up to £500 (25% contribution from SNPC of £125). KD to send contact details for National Highways to GW who has made a commitment to find out the process for SID deployment on A36. KD to arrange site meeting with SB to confirm location for SID infrastructure on C283. 17/4/24 Works order with contractors for implementation. KD to organise new traffic surveys for C283 to reassess location for on-carriageway footway against criteria.	3/7/24 Works anticipated to be completed by end of July. The latest traffic survey undertaken in May 2024, awaiting results. KD to chase.	
h)	1-23-4 Holders Road Amesbury signs	Need to indicate the school entrance to vehicle drivers and danger of children accessing/leaving the school Group support, move to design phase. Design will be submitted to Amesbury TC for consideration prior to meeting. Cost estimate £1000. 17/4/24 Works order with contractors for implementation.	3/7/24 Works anticipated to be completed by end of July.	

STONEHENGE LOCAL HIGHWAYS AND FOOTWAYS IMPROVEMENT GROUP ACTION NOTES

i)	<p><u>1-22-28</u> Shrewton Rolleston Crossroads weight limit signing amendments</p>	<p>Order has been submitted to the contractor for implementation, date not yet provided. Cost estimate £1200. <u>17/4/24</u> Works order with contractors for implementation.</p>	<p><u>3/7/24</u> Works anticipated to be completed by end of July.</p>	
j)	<p><u>1-22-8/11</u> Amesbury waiting restrictions</p>	<p>Group agreed funding of £7,000 to progress Waiting Reviews batch 001 for 2022/23. Waiting Restriction batch 001 cabinet report has been submitted for a final decision following the end of the formal consultation phase will be 20th October – 21st November 2022. Cabinet member report accepted – this will be submitted via the website and now awaits final appeal time. Order for the contractor is being prepared by the apprentice for implementation ASAP <u>17/4/24</u> Work 95% complete, one location outstanding. Will continue to chase contractor to finish.</p>	<p><u>3/7/24</u> Mills Way is only outstanding site to complete. Issues with adjacent business and parking.</p>	
k)	<p><u>1-23-9</u> SID sockets & post A360 Tilshead</p>	<p><u>16/08/23</u> Group agreed to progress SID deployment sites. Rhiann has undertaken site meeting with Tilshead PC to determine locations. <u>15/11/23</u> Works pack being finalised. Anticipate completion by end of financial year. <u>17/4/24</u> Works order with contractors for implementation. One location still to complete.</p>	<p><u>3/7/24</u> Work complete.</p>	
l)	<p><u>1-22-24</u> Bulford cycle signing</p>	<p>RS to now order SDR to capture data to allow an additional sign, to stay on the agenda and discuss following the results. <u>16/08/23</u> Group support, Bulford confirmed 25% via email prior to meeting. RS to draft proposal <u>15/11/23</u> Works pack in progress. <u>17/4/24</u> Work complete. BPC commented they never received a proposal plan and not sure what signs have been ordered or if work has been completed. KD to discuss with RS.</p>	<p><u>3/7/24</u> Ongoing discussion with BPC regarding location of signing. BPC to confirm if they are happy for sign to be moved as per suggestion in KD email.</p>	

STONEHENGE LOCAL HIGHWAYS AND FOOTWAYS IMPROVEMENT GROUP ACTION NOTES

m)	1-23-14 Street name plate review London Road Shrewton	<p>16/08/23 Group agreed to progress street name plates.</p> <p>15/11/23 Design & estimate sent to Shrewton PC for review. £1,000. Contributions as follows: LHFIG 75%=£750, PC 25%=£250. Group agreed funding. SPC agreed contribution.</p> <p>7/2/24 Order issued; construction anticipated Spring 2024.</p> <p>17/4/24 Work to be completed imminently.</p>	3/7/24 Works anticipated to be completed by end of July.	
n)	1-22-10 Amesbury village gates and planters	<p>16/08/23 RS met with Amesbury TC to discuss, initially site was chosen for Countess Road but this has changed to Vineys Farm. Group offer support 1 x village gate at Vineys Farm. RS will provide Amesbury TC with a design and cost.</p> <p>15/11/23 Design & estimate sent to Amesbury TC for review. £3,300. Contributions as follows: LHFIG 75%=£2,475, PC 25%=825. Group agreed funding. ATC agreed contribution.</p> <p>7/2/24 Order issued; construction anticipated Spring 2024.</p> <p>17/4/24 Work to be completed imminently.</p>	3/7/24 Works anticipated to be completed by end of July.	
o)	1-23-2 Beverley Hills Park entrance, Amesbury kerbs	<p>The elderly residents are unable to get their mobility scooters up onto the pavement using the current drop curb, without putting themselves dangerously near a busy road. The height of the curb leading up to it, is also too high to 'bump' the mobility scooters up without a risk of toppling or causing further injury to a physically vulnerable person. This is the ONLY access point for the residents to exit the site. Group support, move to design phase.</p> <p>15/11/23 Design & estimate sent to Amesbury TC for review. £3,500. Contributions as follows: LHFIG 75%=£2,625, PC 25%=875. Group agreed funding. ATC agreed contribution.</p> <p>7/2/24 Order issued; construction anticipated Spring 2024.</p> <p>17/4/24 Work scheduled for summer 2024.</p>	3/7/24 Works anticipated to be completed by end of July.	
p)	1-22-6 Durrington issues	<p>Group agreed funding. Town Council agreed contribution at July 2022 meeting.</p> <ol style="list-style-type: none"> Two street nameplates missing to be replaced. Group 	3/7/24 Works order with contractor for implementation.	

STONEHENGE LOCAL HIGHWAYS AND FOOTWAYS IMPROVEMENT GROUP ACTION NOTES

		agree.(Stonehenge Road o-s Inn & Glendale Road north) 7/2/24 Street name plates outstanding. Works pack in progress. 17/4/24 Order with contractor, awaiting construction.		
7.	Other Items			
a)	Speed limit reviews	The group discussed in detail the way speed limit reviews are done. Graham Wright confirmed the process of how Atkins carry these out once they have been requested by the LHFIG. Further consideration is required, and GW took an action to set up a task group with members of the LHFIG who have outstanding or completed contentious speed limit reviews to discuss in more detail how this will be raised with the cabinet for a potential review of the processes and policies. RS to provide contact details to GW to set up a first meeting. Many issues on the agenda plus a trial of Netheravon have been discussed. GW to provide an update at the next LHFIG meeting on how this has gone to the group. Cllr wright has sent initial emails with an aim to set up this task group between April/May	Environment Select Committee (member led) have set up a task group working with Wiltshire Council Highways officers to look at a new policy for speed limit assessments going forward.	
b)	Telegraph Hill	Bulford PC raised the matter surrounding ongoing issues on Telegraph Hill. GW and RS have taken an action to investigate further. Update 16/08/23 – Spoken with Spencer Drinkwater, no positive update at this stage	3/7/24 Cllr Yuill agreed to contact Spencer Drinkwater for an update on LTP4.	
8.	Date of Next Meeting:	2 nd October 2024 (Microsoft Teams meeting)		

STONEHENGE LOCAL HIGHWAYS AND FOOTWAYS IMPROVEMENT GROUP ACTION NOTES

Stonehenge Area Local Highways and Footways Improvement Group

Highway Officer – Kate Davey

1. Environmental & Community Implications

1.1. Environmental and community implications were considered by the LHFIG during their deliberations. The funding of projects will contribute to the continuance and/or improvement of environmental, social and community wellbeing in the community area, the extent and specifics of which will be dependent upon the individual project.

2. Financial Implications

2.1. All decisions must fall within the Highways funding allocated to Stonehenge Area Board.

2.2. If funding is allocated in line with LHFIG recommendations outlined in this report, and all relevant 3rd party contributions are confirmed, Stonehenge Area Board will have a remaining Highways funding balance remaining budget of **£27,587.00**.

3. Legal Implications

3.1. There are no specific legal implications related to this report.

4. HR Implications

4.1. There are no specific HR implications related to this report.

5. Equality and Inclusion Implications

5.1 The schemes recommended to the Area Board will improve road safety for all users of the highway.

6. Safeguarding implications

6.1 There are no specific safeguarding implications related to this report.

Wiltshire Council

Stonehenge Area Board

26 September 2024

Stonehenge Area Grant Report

Purpose of the Report

1. To provide details of the grant applications made to the Stonehenge Area Board. These could include:
 - community area grants
 - youth grants
 - older and vulnerable people grants
 - area board initiatives
2. To document any recommendations provided through sub groups.

Area Board Current Financial Position

	Community Area Grants	Youth Grants	Older and Vulnerable People Grants
Opening Balance For 2024/25	£ 24,831.00	£ 22,414.00	£ 7,700.00
Awarded To Date	£ 15,314.78	£ 2,895.08	£ 4,404.00
Current Balance	£ 9,516.22	£ 19,518.92	£ 3,296.00
Balance if all grants are agreed based on recommendations	£ 3,023.22	£ 16,008.92	£ 1,796.00

Grant Funding Application Summary

Application Reference	Grant Type	Applicant	Project	Total Cost	Requested
ABG1889	Community Area Grant	God Unlimited Outdoor Therapy	Gul Riverside Classroom Installation	£30000.00	£5000.00

Project Summary:

Gul has grown to support a large number of young people from across Wiltshire. Its facilities at its Riverside site are not sufficient to provide indoor spaces for its beneficiaries and so it plans to replace some existing outbuildings with a purpose built building to house a large classroom/ conference area and administrative functions. By doing so Gul can offer a wider range of content to its beneficiaries and improve it's administrative efficiency and allow the conversion of other buildings to make them fit for purpose.

ABG1969	Community Area Grant	Woodford Village Hall	Woodford Village Hall PA System	£2986.99	£1493.00
-------------------------	----------------------	-----------------------	---------------------------------	----------	----------

Project Summary:

Thanks to area board community grants received in the past for our staging, lighting and sound system, we now have a professional set up in the Hall that attracts gigs on a regular basis. The one element missing is a PA system which we currently have to hire. We would therefore like to purchase our own to complete the system.

Application Reference	Grant Type	Applicant	Project	Total Cost	Requested
ABG1955	Older and Vulnerable Adults Funding	Wiltshire Music Centre	Celebrating Age Wiltshire	£10809.00	£1500.00
<p>Project Summary: Celebrating Age Wiltshire is a Creative health and wellbeing project that delivers high quality professional creative arts, music, theatre and heritage events and activities on a monthly basis for older, vulnerable adults in local daytime settings.</p>					
ABG1975	Youth Grant	Amesbury Junior Football Club	Amesbury Junior FC Training grant	£7020.00	£3510.00
<p>Project Summary: Amesbury Junior FC (AJFC) provides footballing activities through training and games for upto 400 youths in our local area. We currently have 24 teams of which there are 5 boys(mixed) teams and 2 all girl teams in the 13 to 19 years old bracket. Funding is currently low with only £4244.48 in our end of year balance and we are looking for help fund a £7020 invoice for winter training at Bulford 3G.</p>					

Background

3. Area Boards have authority to approve funding under powers delegated to them. Under the Scheme of Delegation Area Boards must adhere to the Area Board Funding and Grants Criteria. This document is available on the council's website.
4. Three funding streams are available to the Area Board, each with an annually awarded amount. These funding streams are as follows:
 - Community Area Grants (capital)
 - Youth Grants (revenue)
 - Older and Vulnerable People Grants (revenue)
5. The Area Board will be advised of the funding available prior to their first meeting of each financial year.

Main Considerations

6. Councillors need to be satisfied that the applications meet the requirements as set out in the Area Board Funding and Grants Criteria and that the health and wellbeing and young persons funding guidelines have been adhered to.
7. Councillors must ensure that the distribution of funding is in accordance with the Scheme of Delegation to Area Boards.
8. Councillors need to consider any recommendations made by sub groups of the Area Boards.

Safeguarding Implications

9. The Area Board has ensured that the necessary policies and procedures are in place to safeguard children, young people and vulnerable adults.

Public Health Implications

10. The Area Board has ensured that the necessary policies and procedures are in place to safeguard children, young people and vulnerable adults.

Environmental & Climate Change Implications

11. Grant funding will contribute to the continuance and/or improvement of cultural, social and community activity and wellbeing in the community area, the extent of which will be dependent upon the individual project.

Financial Implications

12. Councillors must ensure that the Area Board has sufficient funding available to cover the grants awarded.

Legal Implications

13. There are no specific legal implications related to this report.

Workforce Implications

14. There are no specific human resources implications related to this report.

Equalities Implications

15. Community Area Boards must fully consider the equality impacts of their decisions in order to meet the Council's Public Sector Equality Duty.
16. Community Area Grants will give local community and voluntary groups, Town and Parish Councils equal opportunity to receive funding towards community based projects and schemes where they meet the funding criteria.

Proposals

17. To consider and determine the applications for grant funding.

Report Author

- Graeme Morrison, Strategic Engagement and Partnership Manager, Graeme.Morrison@wiltshire.gov.uk
- Karlene Jammeh, Strategic Engagement and Partnership Manager, karlene.jammeh@wiltshire.gov.uk

No unpublished documents have been relied upon in the preparation of this report.

